

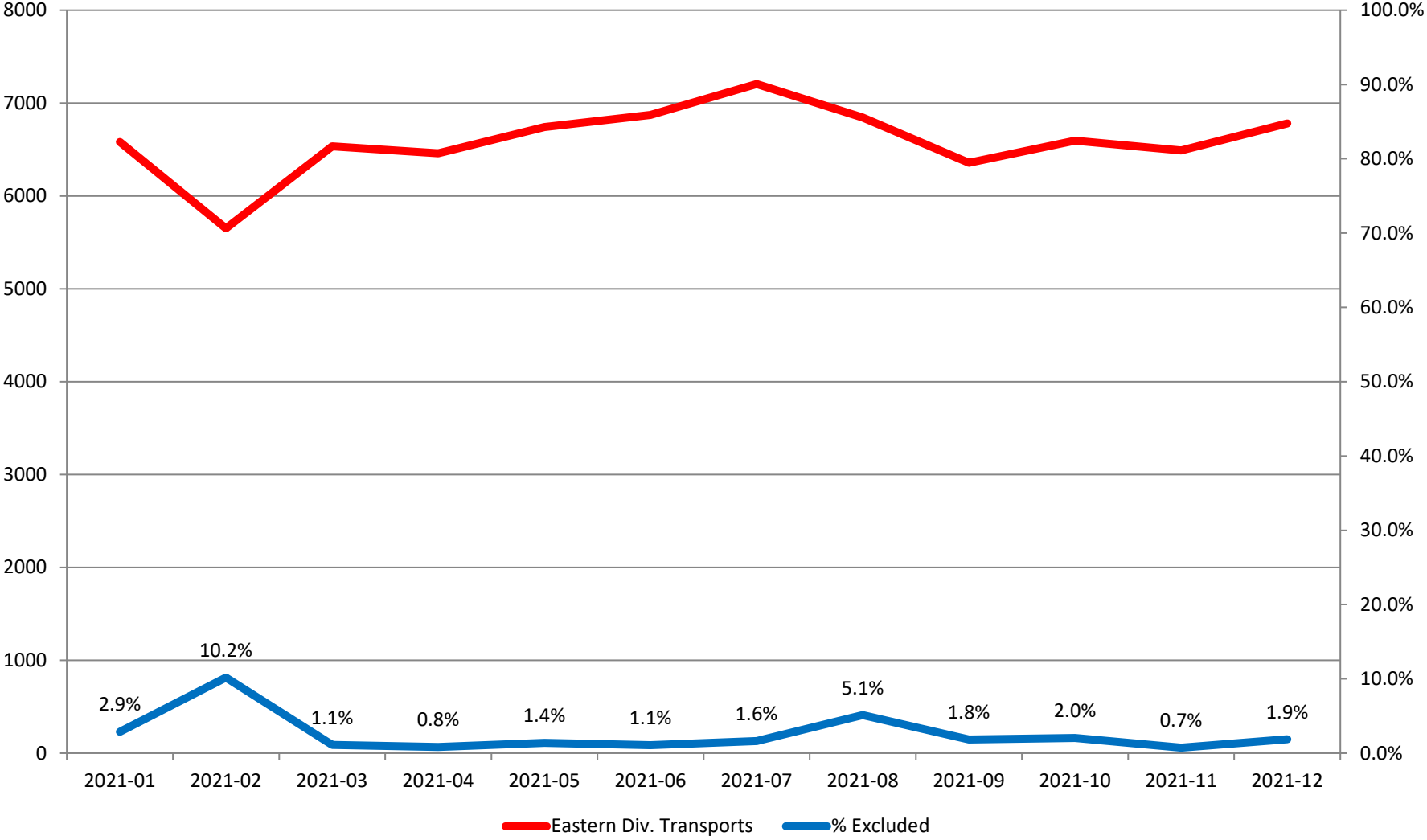
Response Time Exclusion Summary Report
 Three Months ending December, 2021

	Month Priority	2021-10				2021-11				2021-12			
		1	2	3	4	1	2	3	4	1	2	3	4
Eastern Division													
Final Other													
Final Other Declared Disaster													
Final Other 2nd Unit													
Final Other Interfacility Transfer													
Final System Overload		35	73	10	0	17	16	9	0	23	75	20	0
Final Weather		16				4	2			7	1		
Eastern Exclusions Total		51	73	10	0	21	18	9	0	30	76	20	0
East Transports*		1947	3561	1071	17	1883	3552	1039	16	2031	3680	1051	18
East Late		303	347	243	1	258	304	298	1	335	416	385	5
East % of Transports		3%	2%	1%	0%	1%	1%	1%	0%	1%	2%	2%	0%
East Compliance**		84%	90%	77%	94%	86%	91%	71%	93%	83%	88%	63%	72%
East Compliance W/O Exclusions**		82%	88%	76%	94%	85%	90%	70%	93%	82%	86%	62%	72%
Western Division													
Final Other													
Final Other Declared Disaster													
Final Other 2nd Unit													
Final Other Interfacility Transfer													
Final System Overload		43	70	14	0	42	47	6	0	141	150	33	0
Final Weather		40	35			17	8			19	14		
Western Exclusions Total		83	105	14	0	59	55	6	0	160	164	33	0
West Transports*		2594	3925	977	5	2429	3843	1086	9	2600	3925	1062	11
West Late		1178	863	498	3	1060	769	531	5	1246	1058	537	6
West % of Transports		3%	3%	1%	0%	2%	1%	1%	0%	6%	4%	3%	0%
West Compliance**		54%	78%	49%	40%	56%	79%	51%	44%	52%	73%	49%	45%
West Compliance W/O Exclusions**		52%	75%	48%	40%	55%	78%	50%	44%	49%	70%	47%	45%

* For the purposes of this report, transports means the number of transports that qualify for inclusion for compliance calculation purposes. Multi-unit response transports for greater than the first unit on

** For the purposes of this report, beneficiary and non-beneficiary cities have been combined. Contract compliance measures them separately.

Eastern Division Response Time Exclusions Twelve Months ending December, 2021



Western Division Response Time Exclusions Twelve Months ending December, 2021

