

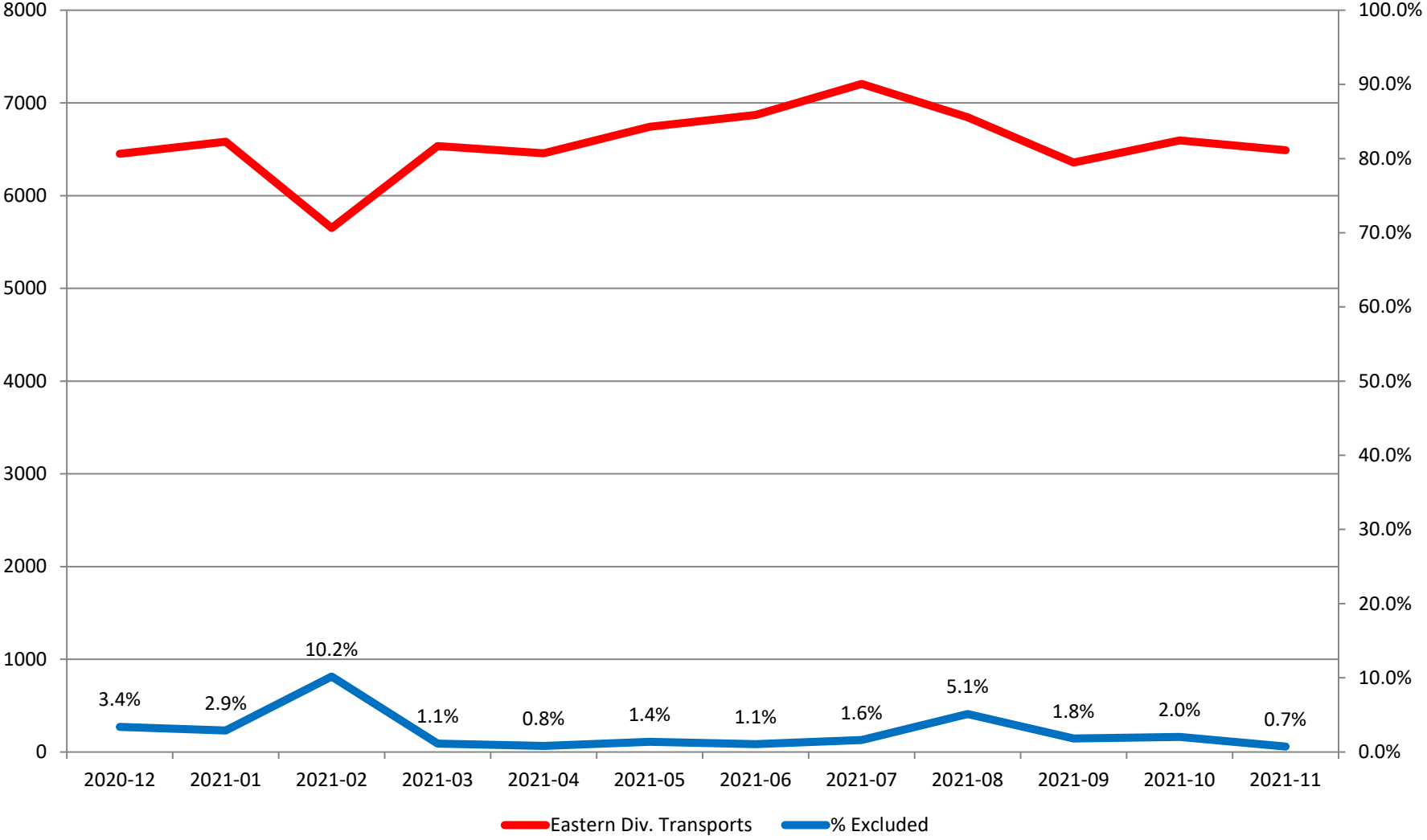
Response Time Exclusion Summary Report  
 Three Months ending November, 2021

	Month Priority	2021-09				2021-10			
		1	2	3	4	1	2	3	4
<b>Eastern Division</b>									
Final Other									
Final Other Declared Disaster									
Final Other 2nd Unit									
Final Other Interfacility Transfer									
Final System Overload		41	68	6		35	73	10	
Final Weather		1	1			16			
<b>Eastern Exclusions Total</b>		<b>42</b>	<b>69</b>	<b>6</b>	<b>0</b>	<b>51</b>	<b>73</b>	<b>10</b>	<b>0</b>
<b>East Transports*</b>									
		1965	3408	967	16	1947	3561	1071	17
<b>East Late</b>									
		352	444	234	4	303	347	243	1
<b>East % of Transports</b>									
		2%	2%	1%	0%	3%	2%	1%	0%
<b>East Compliance**</b>									
		82%	86%	75%	75%	84%	90%	77%	94%
<b>East Compliance W/O Exclusions**</b>									
		80%	85%	75%	75%	82%	88%	76%	94%
<hr/>									
	Month Priority	2021-09				2021-10			
		1	2	3	4	1	2	3	4
<b>Western Division</b>									
Final Other									
Final Other Declared Disaster									
Final Other 2nd Unit									
Final Other Interfacility Transfer									
Final System Overload		245	308	56		43	70	14	
Final Weather		14	28	0		40	35		
<b>Western Exclusions Total</b>		<b>259</b>	<b>336</b>	<b>56</b>	<b>0</b>	<b>83</b>	<b>105</b>	<b>14</b>	<b>0</b>
<b>West Transports*</b>									
		2510	3779	953	5	2594	3925	977	5
<b>West Late</b>									
		1169	929	434	4	1178	863	498	3
<b>West % of Transports</b>									
		10%	9%	6%	0%	3%	3%	1%	0%
<b>West Compliance**</b>									
		53%	75%	54%	20%	54%	78%	49%	40%
<b>West Compliance W/O Exclusions**</b>									
		48%	69%	51%	20%	52%	75%	48%	40%

\* For the purposes of this report, transports means the number of transports that qualify for inclusion for compliance calculation purposes. Multi-unit response transports for greater than the first unit on

\*\* For the purposes of this report, beneficiary and non-beneficiary cities have been combined. Contract compliance measures them separately.

# Eastern Division Response Time Exclusions Twelve Months ending November, 2021



## Western Division Response Time Exclusions Twelve Months ending November, 2021

