

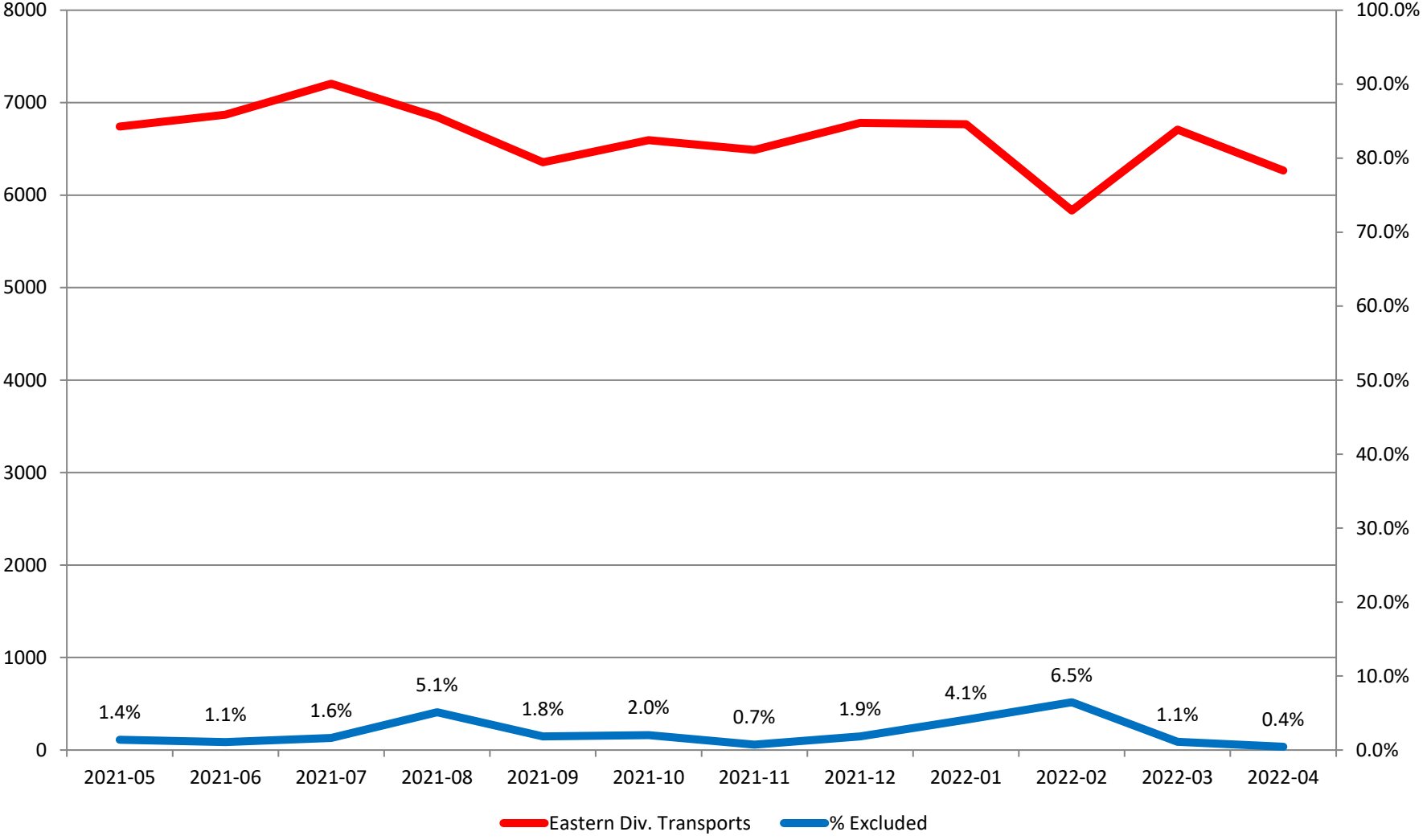
Response Time Exclusion Summary Report
 Three Months ending April, 2022

Month Priority	2022-02				2022-03				2022-04			
	1	2	3	4	1	2	3	4	1	2	3	4
Eastern Division												
Final Other												
Final Other Declared Disaster												
Final Other 2nd Unit												
Final Other Interfacility Transfer												
Final System Overload	76	113	23		23	29	10		13	11		
Final Weather	85	50	30		9	2	2		4			
Eastern Exclusions Total	161	163	53	0	32	31	12	0	17	11	0	0
East Transports*	1684	3199	923	28	2020	3662	1011	16	1903	3404	944	16
East Late	276	310	252	9	221	218	241	1	198	179	142	4
East % of Transports	10%	5%	6%	0%	2%	1%	1%	0%	1%	0%	0%	0%
East Compliance**	83%	90%	72%	67%	89%	94%	76%	93%	89%	94%	84%	75%
East Compliance W/O Exclusions**	76%	85%	68%	67%	87%	93%	75%	93%	88%	94%	84%	75%
Western Division												
Final Other												
Final Other Declared Disaster												
Final Other 2nd Unit												
Final Other Interfacility Transfer												
Final System Overload	36	48	6		48	50	10		36	37	3	
Final Weather	69	45	7		43	27	1	1	22	18		
Western Exclusions Total	105	93	13	0	91	77	11	1	58	55	3	0
West Transports*	2154	3323	1050	9	2424	3900	1173	13	2170	3725	1166	20
West Late	1026	870	483	1	1015	849	460	9	775	645	388	6
West % of Transports	5%	3%	1%	0%	4%	2%	1%	8%	3%	1%	0%	0%
West Compliance**	52%	73%	54%	88%	58%	78%	60%	30%	64%	82%	66%	70%
West Compliance W/O Exclusions**	49%	71%	53%	88%	56%	76%	60%	28%	62%	81%	66%	70%

* For the purposes of this report, transports means the number of transports that qualify for inclusion for compliance calculation purposes. Multi-unit response transports for greater than the first unit on

** For the purposes of this report, beneficiary and non-beneficiary cities have been combined. Contract compliance measures them separately.

Eastern Division Response Time Exclusions Twelve Months ending April, 2022



Western Division Response Time Exclusions Twelve Months ending April, 2022

