

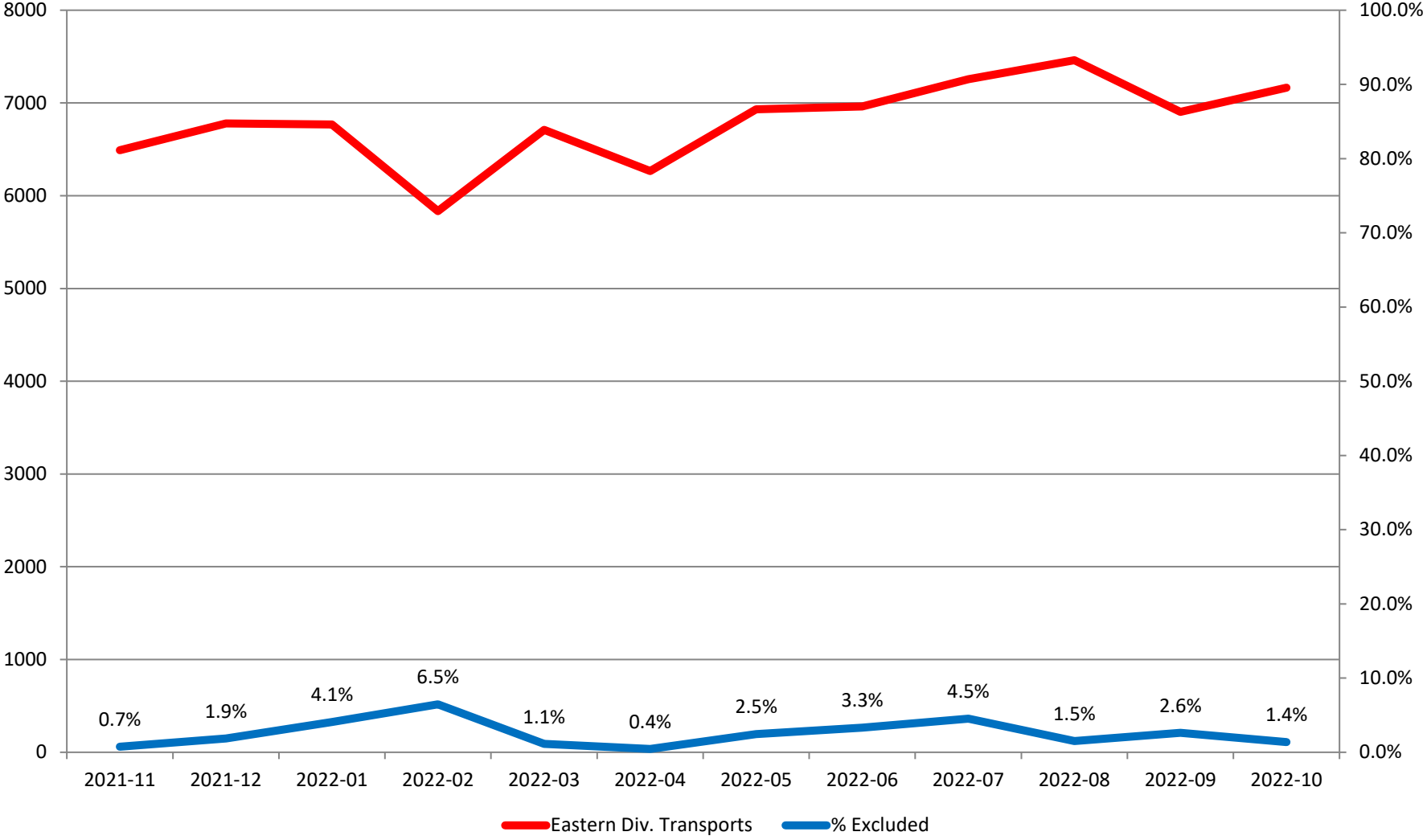
Response Time Exclusion Summary Report
 Three Months ending October, 2022

Month Priority	2022-08				2022-09				2022-10			
	1	2	3	4	5	6	7	8	9	10	11	12
Eastern Division												
Final Other												
Final Other Declared Disaster												
Final Other 2nd Unit												
Final Other Interfacility Transfer												
Final System Overload	42	69			38	48	86		44	55		
Final Weather	3				3	1	4					
Eastern Exclusions Total	45	69	0	0	41	49	90	0	44	55	0	0
East Transports*	2498	3761	1185	17	2138	3630	1119	16	2168	3813	1151	34
East Late	1134	211	191	1	199	112	132	4	196	118	94	2
East % of Transports	2%	2%	0%	0%	2%	1%	8%	0%	2%	1%	0%	0%
East Compliance**	54%	94%	83%	94%	90%	96%	88%	75%	90%	96%	91%	94%
East Compliance W/O Exclusions**	53%	92%	83%	94%	88%	95%	81%	75%	89%	95%	91%	94%
Western Division												
Final Other												
Final Other Declared Disaster												
Final Other 2nd Unit												
Final Other Interfacility Transfer												
Final System Overload	97	117	7		218	215	20		72	94	1	
Final Weather	55	47							79	44	1	
Western Exclusions Total	152	164	7	0	218	215	20	0	151	138	2	0
West Transports*	2498	3996	1459	5	2418	3727	1446	9	2473	3746	1414	13
West Late	1134	996	231	3	1150	1101	217	4	1227	955	169	4
West % of Transports	6%	4%	0%	0%	9%	6%	1%	0%	6%	4%	0%	0%
West Compliance**	54%	75%	84%	40%	52%	70%	84%	55%	50%	74%	88%	69%
West Compliance W/O Exclusions**	51%	72%	83%	40%	48%	66%	83%	55%	47%	71%	87%	69%

* For the purposes of this report, transports means the number of transports that qualify for inclusion for compliance calculation purposes. Multi-unit response transports for greater than the first unit on

** For the purposes of this report, beneficiary and non-beneficiary cities have been combined. Contract compliance measures them separately.

Eastern Division Response Time Exclusions Twelve Months ending October, 2022



Western Division Response Time Exclusions Twelve Months ending October, 2022

