

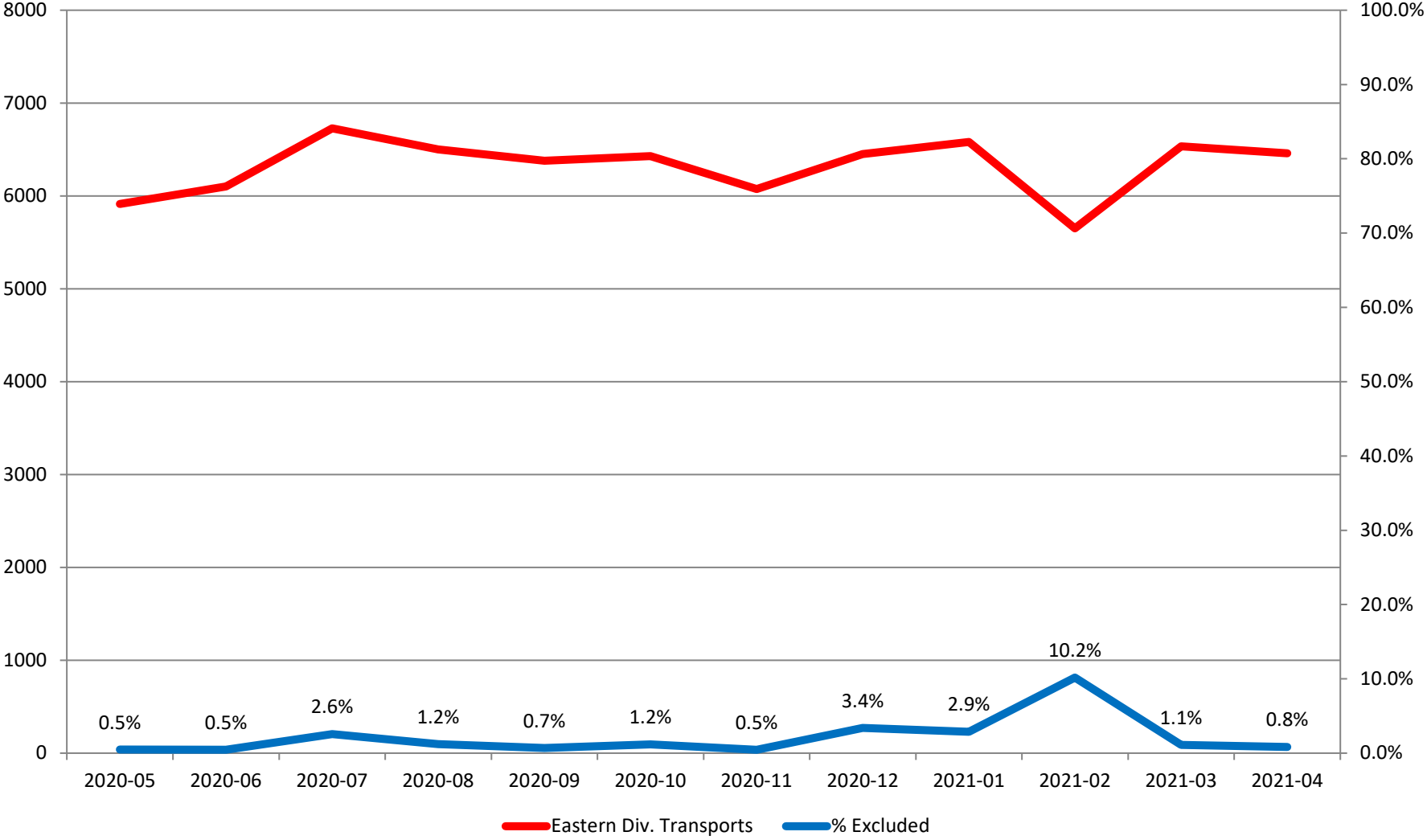
Response Time Exclusion Summary Report
 Three Months ending April, 2021

	Month Priority	2021-02				2021-03				2021-04			
		1	2	3	4	1	2	3	4	1	2	3	4
Eastern Division													
Final Other													
Final Other Declared Disaster													
Final Other 2nd Unit													
Final Other Interfacility Transfer													
Final System Overload		21	24	17	3	23	25	3	0	13	12	6	0
Final Weather		181	249	80	3	17	5	0	0	11	7	4	0
Eastern Exclusions Total		202	273	97	3	40	30	3	0	24	19	10	0
East Transports*		1507	3191	928	25	1819	3652	1052	12	1869	3481	1100	8
East Late		131	114	134	1	193	193	211	3	166	132	134	0
East % of Transports		13%	9%	10%	12%	2%	1%	0%	0%	1%	1%	1%	0%
East Compliance**		91%	96%	85%	96%	89%	94%	79%	75%	91%	96%	87%	100%
East Compliance W/O Exclusions**		80%	88%	77%	85%	87%	93%	79%	75%	89%	95%	87%	100%
Western Division													
Final Other													
Final Other Declared Disaster													
Final Other 2nd Unit													
Final Other Interfacility Transfer													
Final System Overload		127	88	45	1	46	50	6	0	39	35	5	0
Final Weather		304	293	84	0	29	17	14	0	18	9	1	0
Western Exclusions Total		431	381	129	1	75	67	20	0	57	44	6	0
West Transports*		1767	3145	868	12	2418	3773	1020	37	2318	3951	1080	18
West Late		435	262	253	1	687	374	310	10	569	350	202	5
West % of Transports		24%	12%	15%	0%	3%	2%	2%	0%	2%	1%	1%	0%
West Compliance**		75%	91%	70%	91%	71%	90%	69%	72%	75%	91%	81%	72%
West Compliance W/O Exclusions**		60%	81%	61%	84%	69%	88%	68%	72%	73%	90%	80%	72%

* For the purposes of this report, transports means the number of transports that qualify for inclusion for compliance calculation purposes. Multi-unit response transports for greater than the first unit on

** For the purposes of this report, beneficiary and non-beneficiary cities have been combined. Contract compliance measures them separately.

Eastern Division Response Time Exclusions Twelve Months ending April, 2021



Western Division Response Time Exclusions Twelve Months ending April, 2021

