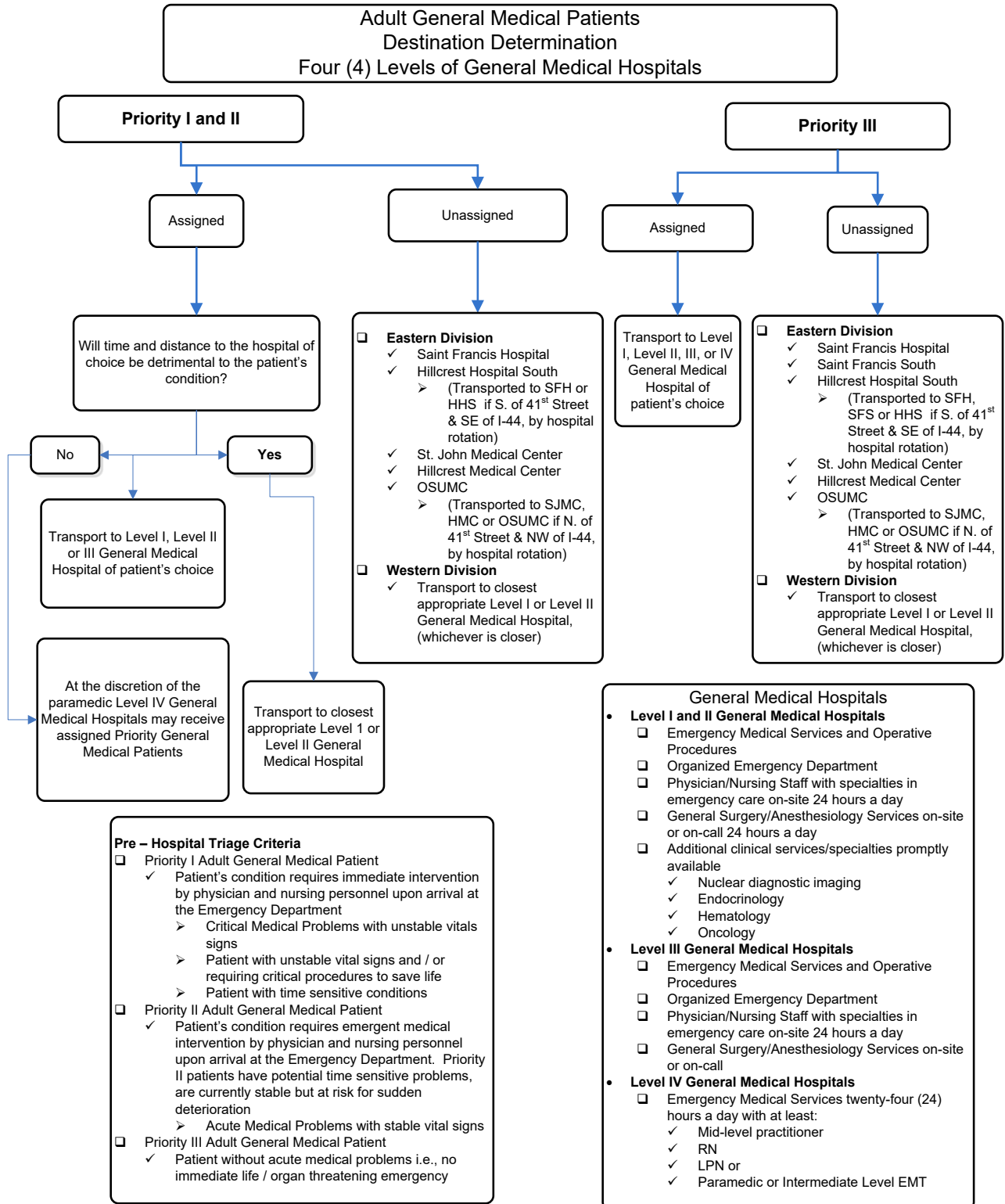




EMS System for Metropolitan Oklahoma City and Tulsa 2026 Medical Control Board Treatment Protocols

Approved 9/17/25, Effective 1/15/26, replaces all prior versions

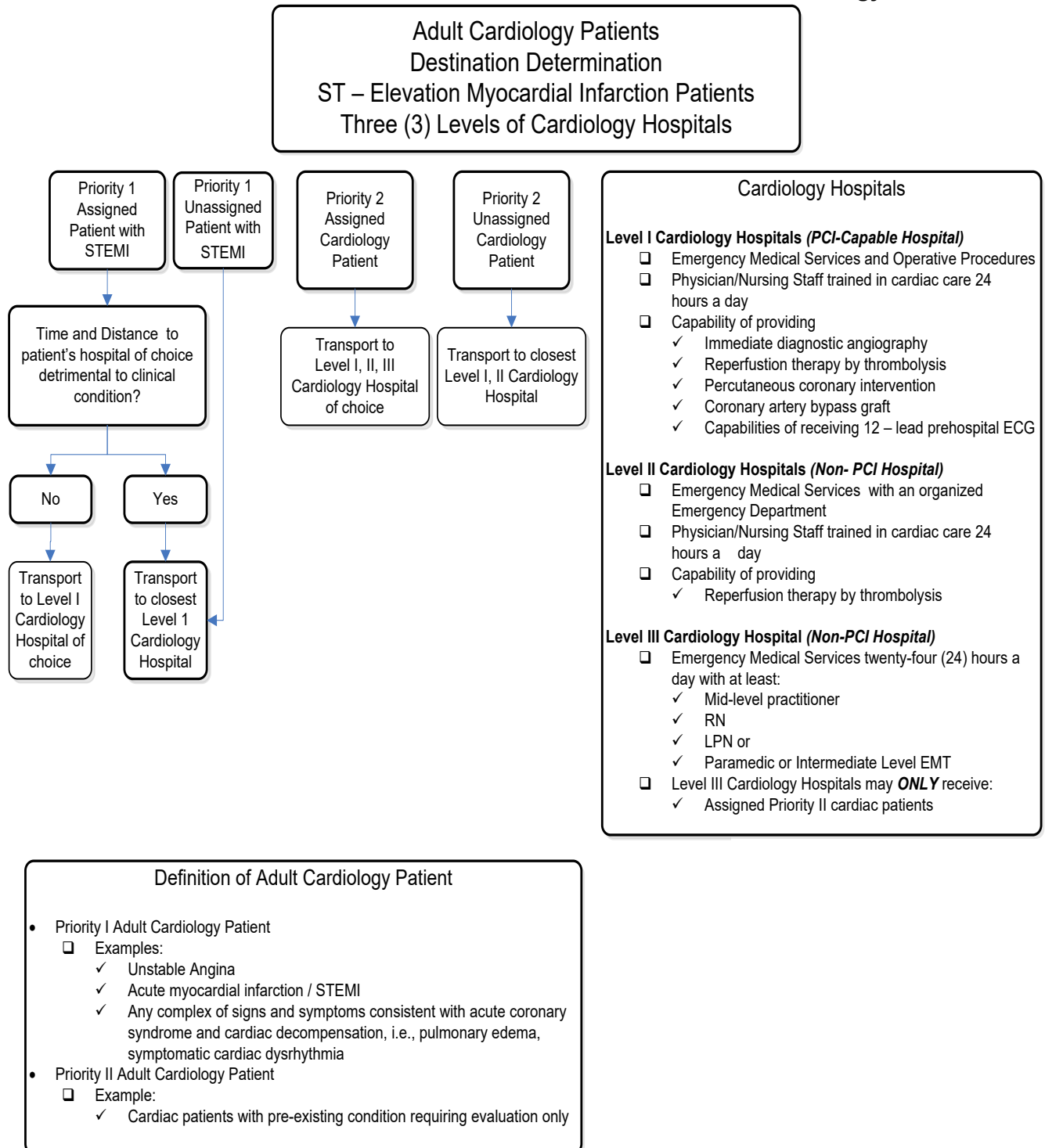
PROTOCOL 17A: Destination Determination – Adult General Medical Patients





EMS System for Metropolitan Oklahoma City and Tulsa 2026 Medical Control Board Treatment Protocols

Approved 9/17/25, Effective 1/15/26, replaces all prior versions
PROTOCOL 17A: Destination Determination – Adult Cardiology Patients

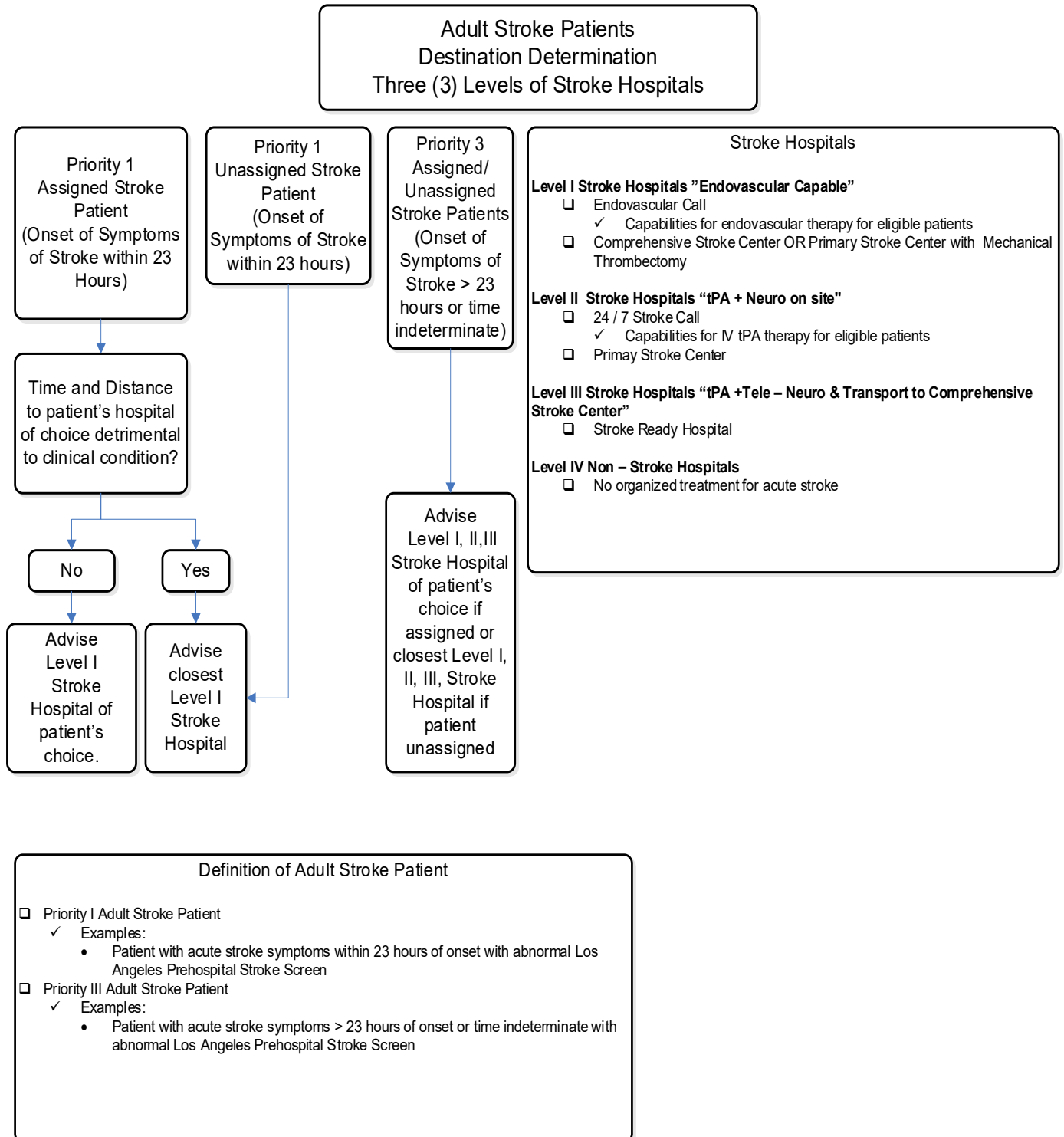




EMS System for Metropolitan Oklahoma City and Tulsa 2026 Medical Control Board Treatment Protocols

Approved 9/17/25, Effective 1/15/26, replaces all prior versions

PROTOCOL 17A: Destination Determination – Adult Stroke Patients

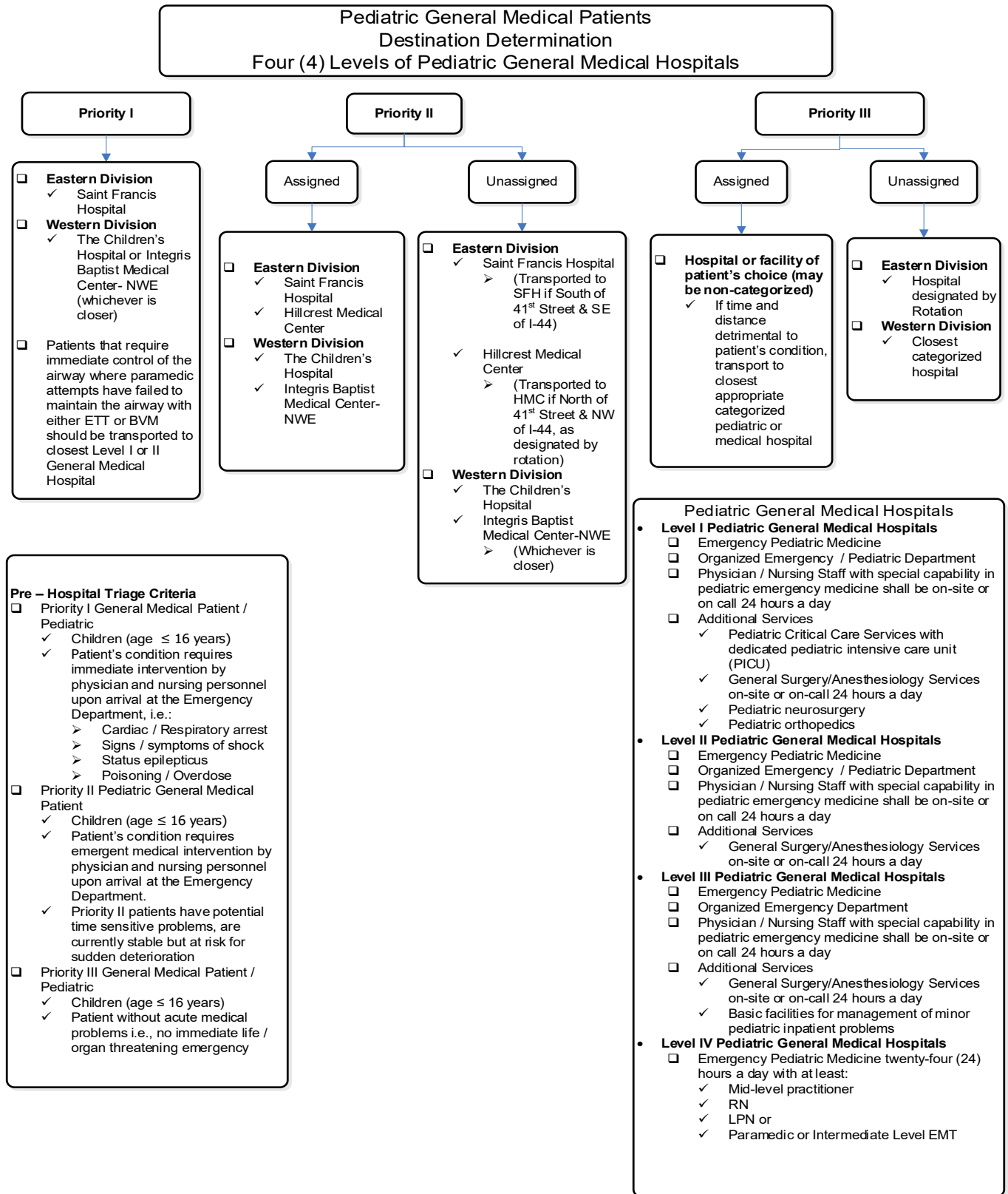




EMS System for Metropolitan Oklahoma City and Tulsa 2026 Medical Control Board Treatment Protocols

Approved 9/17/25, Effective 1/15/26, replaces all prior versions

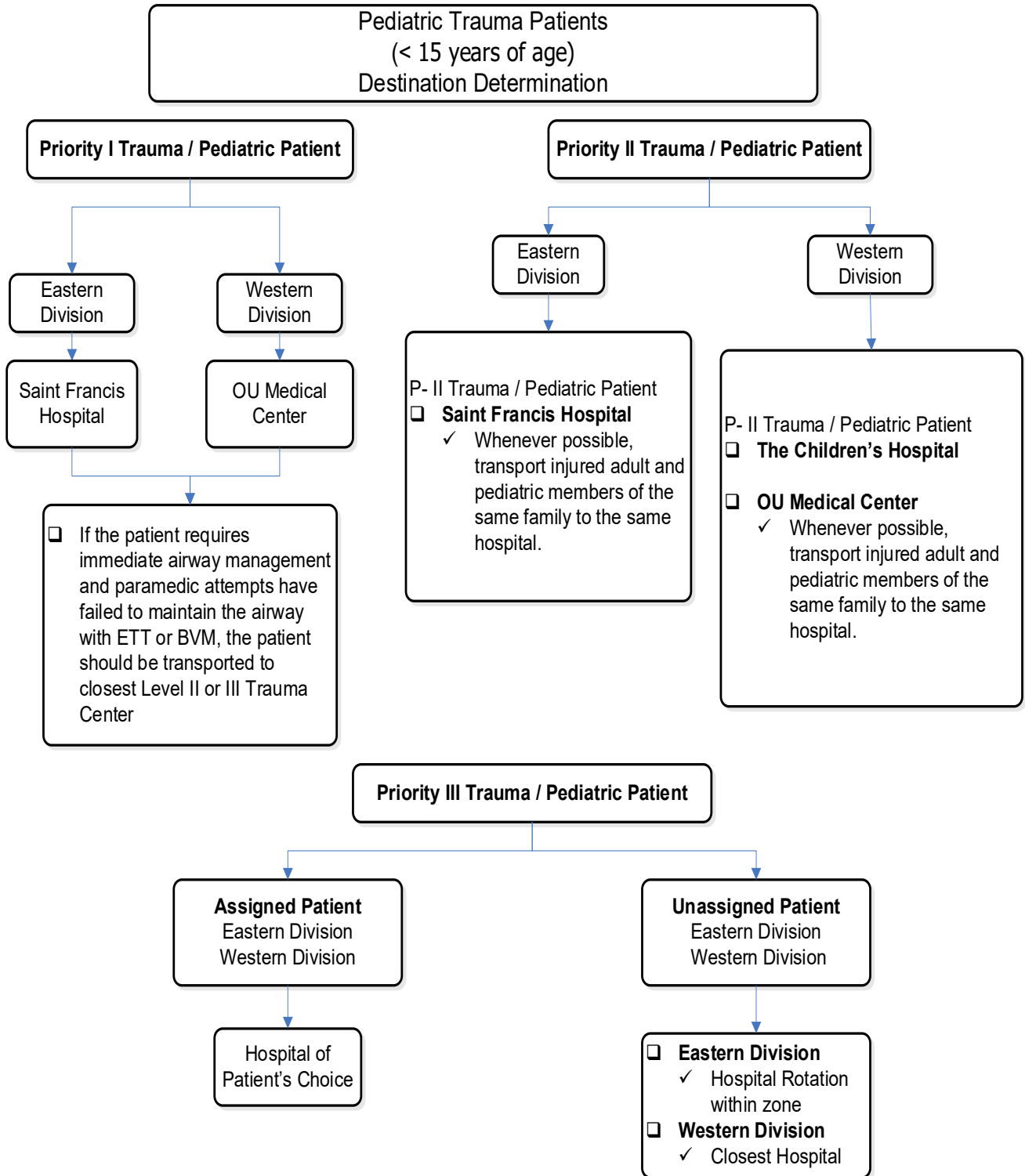
PROTOCOL 17A: Destination Determination– Pediatric General Medical Patients





EMS System for Metropolitan Oklahoma City and Tulsa 2026 Medical Control Board Treatment Protocols

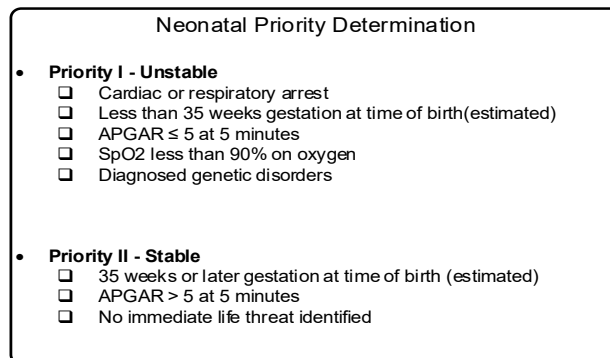
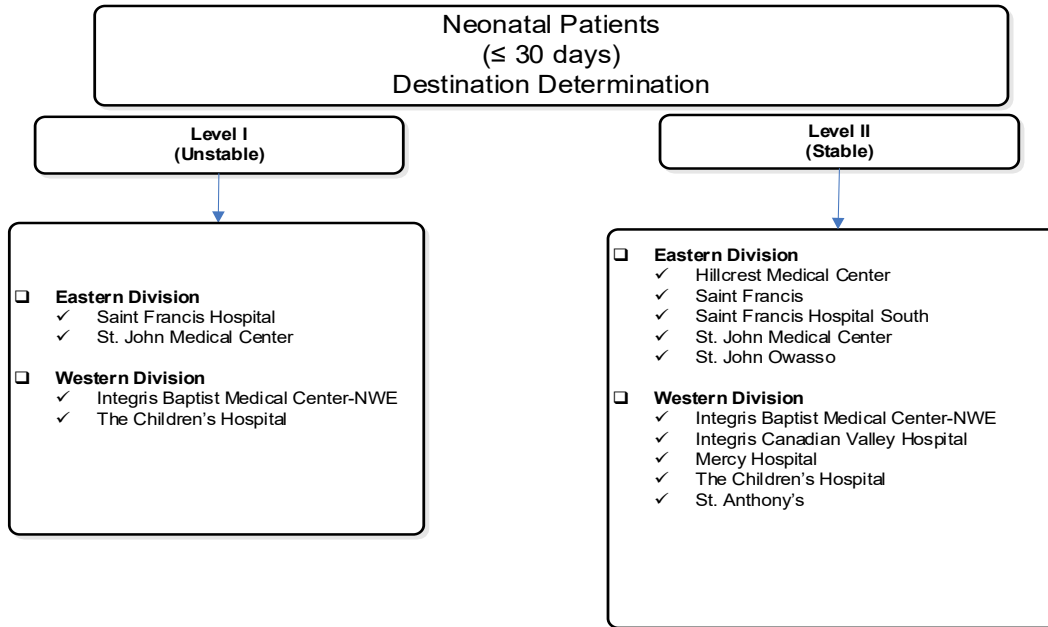
Approved 9/17/25, Effective 1/15/26, replaces all prior versions
PROTOCOL 17A: Destination Determination – Pediatric Trauma Patients





EMS System for Metropolitan Oklahoma City and Tulsa 2026 Medical Control Board Treatment Protocols

Approved 9/17/25, Effective 1/15/26, replaces all prior versions
PROTOCOL 17A: Destination Determination – Neonatal Medical Patients





EMS System for Metropolitan Oklahoma City and Tulsa 2026 Medical Control Board Treatment Protocols

Approved 9/17/25, Effective 1/15/26, replaces all prior versions

