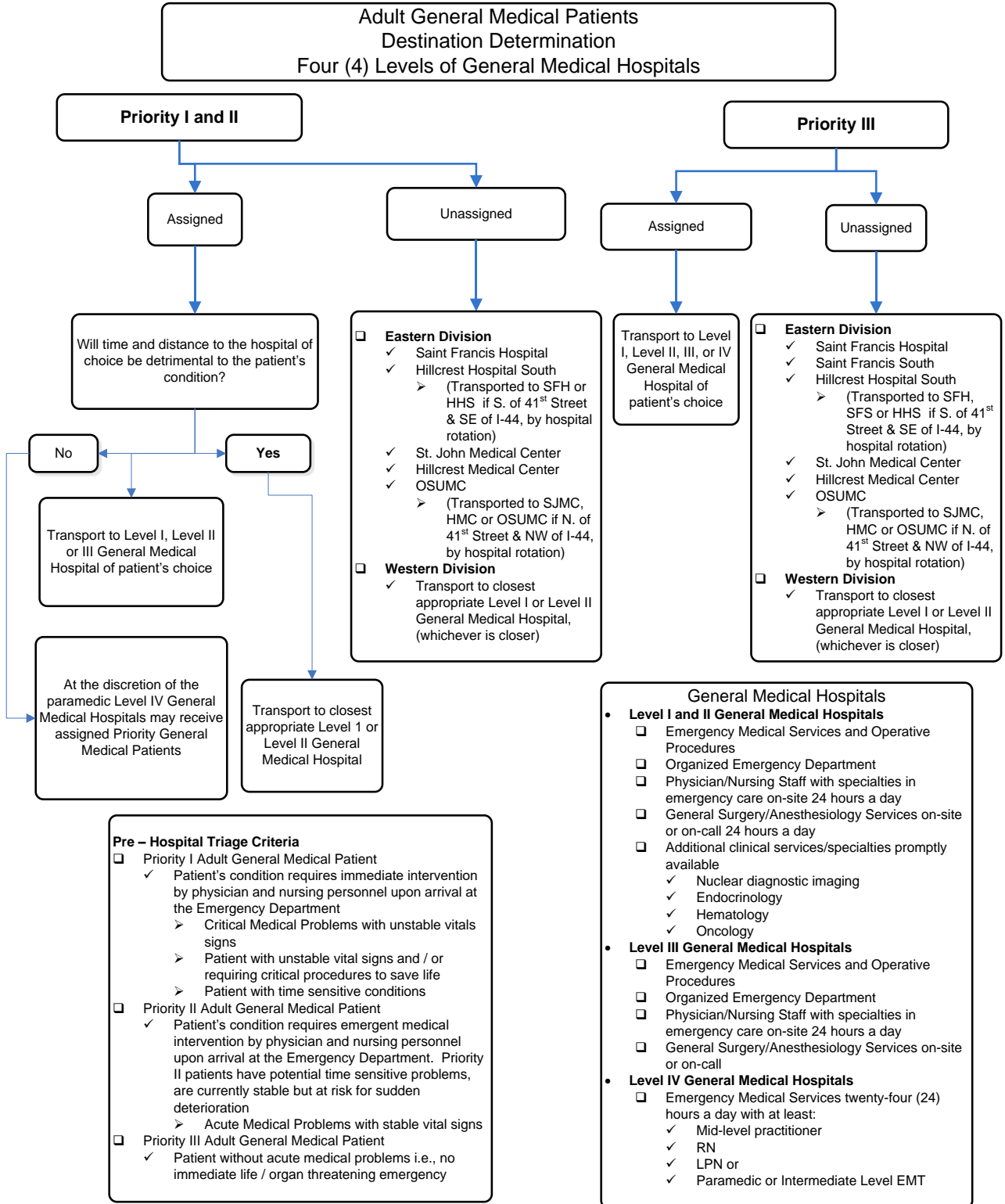




EMS System for Metropolitan Oklahoma City and Tulsa 2021 Medical Control Board Treatment Protocols

Approved 9/9/20, Effective 1/15/21, replaces all prior versions

PROTOCOL 17A: Destination Determination – Adult General Medical Patients

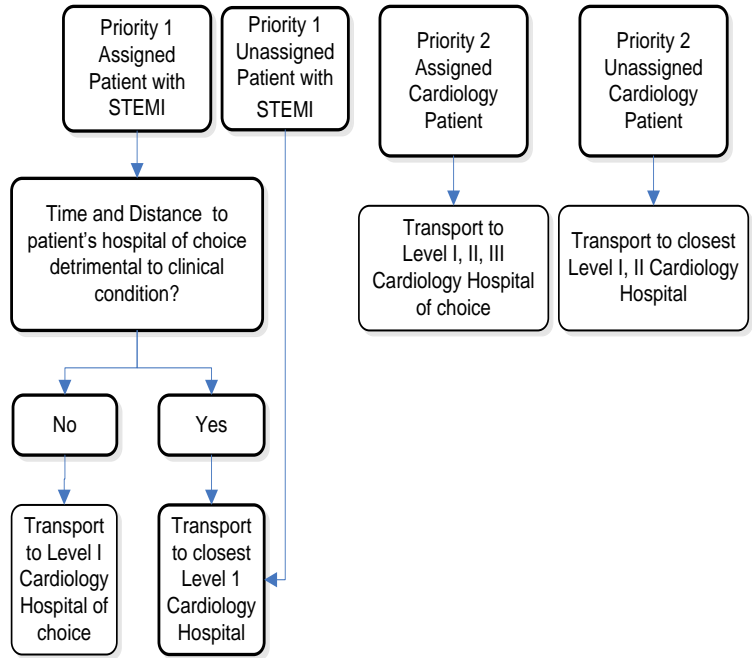




EMS System for Metropolitan Oklahoma City and Tulsa 2021 Medical Control Board Treatment Protocols

Approved 9/9/20, Effective 1/15/21, replaces all prior versions
PROTOCOL 17A: Destination Determination – Adult Cardiology Patients

Adult Cardiology Patients Destination Determination ST – Elevation Myocardial Infarction Patients Three (3) Levels of Cardiology Hospitals



- #### Cardiology Hospitals
- Level I Cardiology Hospitals (PCI-Capable Hospital)**
- Emergency Medical Services and Operative Procedures
 - Physician/Nursing Staff trained in cardiac care 24 hours a day
 - Capability of providing
 - ✓ Immediate diagnostic angiography
 - ✓ Reperfusion therapy by thrombolysis
 - ✓ Percutaneous coronary intervention
 - ✓ Coronary artery bypass graft
 - ✓ Capabilities of receiving 12 – lead prehospital ECG
- Level II Cardiology Hospitals (Non-PCI Hospital)**
- Emergency Medical Services with an organized Emergency Department
 - Physician/Nursing Staff trained in cardiac care 24 hours a day
 - Capability of providing
 - ✓ Reperfusion therapy by thrombolysis
- Level III Cardiology Hospital (Non-PCI Hospital)**
- Emergency Medical Services twenty-four (24) hours a day with at least:
 - ✓ Mid-level practitioner
 - ✓ RN
 - ✓ LPN or
 - ✓ Paramedic or Intermediate Level EMT
 - Level III Cardiology Hospitals may **ONLY** receive:
 - ✓ Assigned Priority II cardiac patients

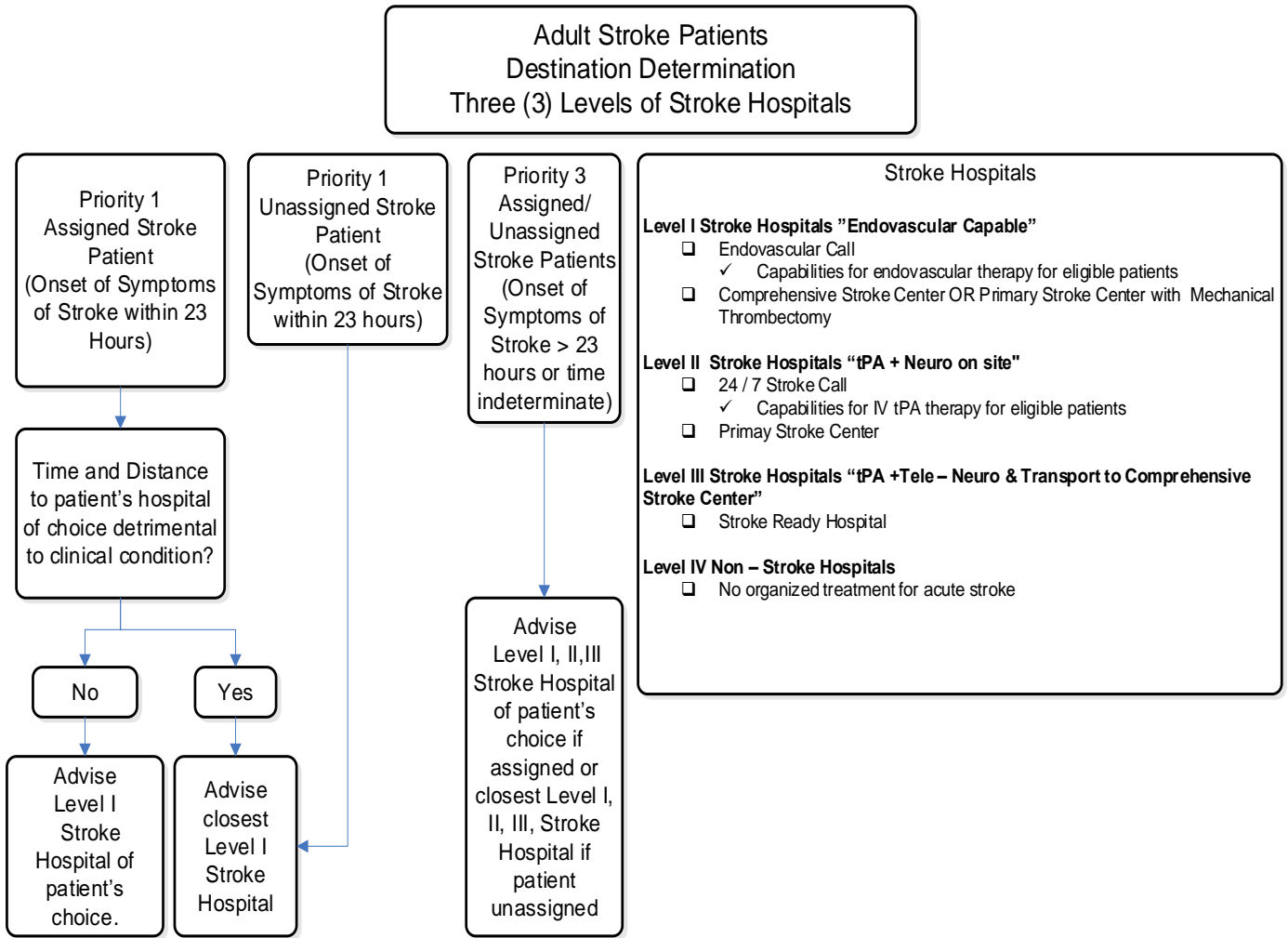
- #### Definition of Adult Cardiology Patient
- Priority I Adult Cardiology Patient
 - Examples:
 - ✓ Unstable Angina
 - ✓ Acute myocardial infarction / STEMI
 - ✓ Any complex of signs and symptoms consistent with acute coronary syndrome and cardiac decompensation, i.e., pulmonary edema, symptomatic cardiac dysrhythmia
 - Priority II Adult Cardiology Patient
 - Example:
 - ✓ Cardiac patients with pre-existing condition requiring evaluation only



EMS System for Metropolitan Oklahoma City and Tulsa 2021 Medical Control Board Treatment Protocols

Approved 9/9/20, Effective 1/15/21, replaces all prior versions

PROTOCOL 17A: Destination Determination – Adult Stroke Patients



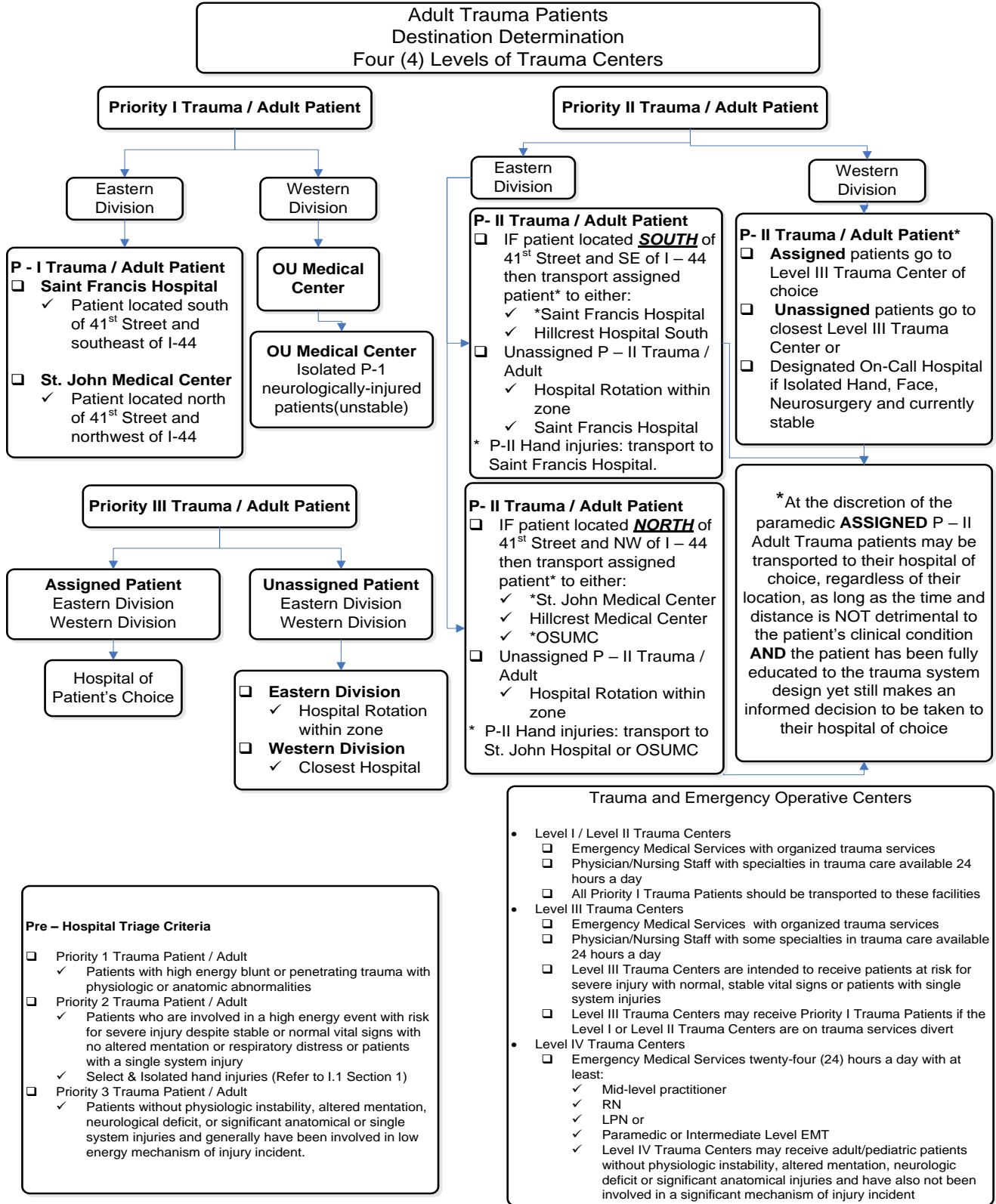
- #### Definition of Adult Stroke Patient

 - Priority I Adult Stroke Patient
 - Examples:
 - Patient with acute stroke symptoms within 23 hours of onset with abnormal Los Angeles Prehospital Stroke Screen
 - Priority III Adult Stroke Patient
 - Examples:
 - Patient with acute stroke symptoms > 23 hours of onset or time indeterminate with abnormal Los Angeles Prehospital Stroke Screen



EMS System for Metropolitan Oklahoma City and Tulsa 2021 Medical Control Board Treatment Protocols

Approved 9/9/20, Effective 1/15/21, replaces all prior versions
PROTOCOL 17A: Destination Determination – Adult Trauma Patients



*At the discretion of the paramedic **ASSIGNED** P – II Adult Trauma patients may be transported to their hospital of choice, regardless of their location, as long as the time and distance is NOT detrimental to the patient's clinical condition **AND** the patient has been fully educated to the trauma system design yet still makes an informed decision to be taken to their hospital of choice

Trauma and Emergency Operative Centers

- Level I / Level II Trauma Centers
 - Emergency Medical Services with organized trauma services
 - Physician/Nursing Staff with specialties in trauma care available 24 hours a day
 - All Priority I Trauma Patients should be transported to these facilities
- Level III Trauma Centers
 - Emergency Medical Services with organized trauma services
 - Physician/Nursing Staff with some specialties in trauma care available 24 hours a day
 - Level III Trauma Centers are intended to receive patients at risk for severe injury with normal, stable vital signs or patients with single system injuries
 - Level III Trauma Centers may receive Priority I Trauma Patients if the Level I or Level II Trauma Centers are on trauma services divert
- Level IV Trauma Centers
 - Emergency Medical Services twenty-four (24) hours a day with at least:
 - ✓ Mid-level practitioner
 - ✓ RN
 - ✓ LPN or
 - ✓ Paramedic or Intermediate Level EMT
 - ✓ Level IV Trauma Centers may receive adult/pediatric patients without physiologic instability, altered mentation, neurologic deficit or significant anatomical injuries and have also not been involved in a significant mechanism of injury incident

Pre – Hospital Triage Criteria

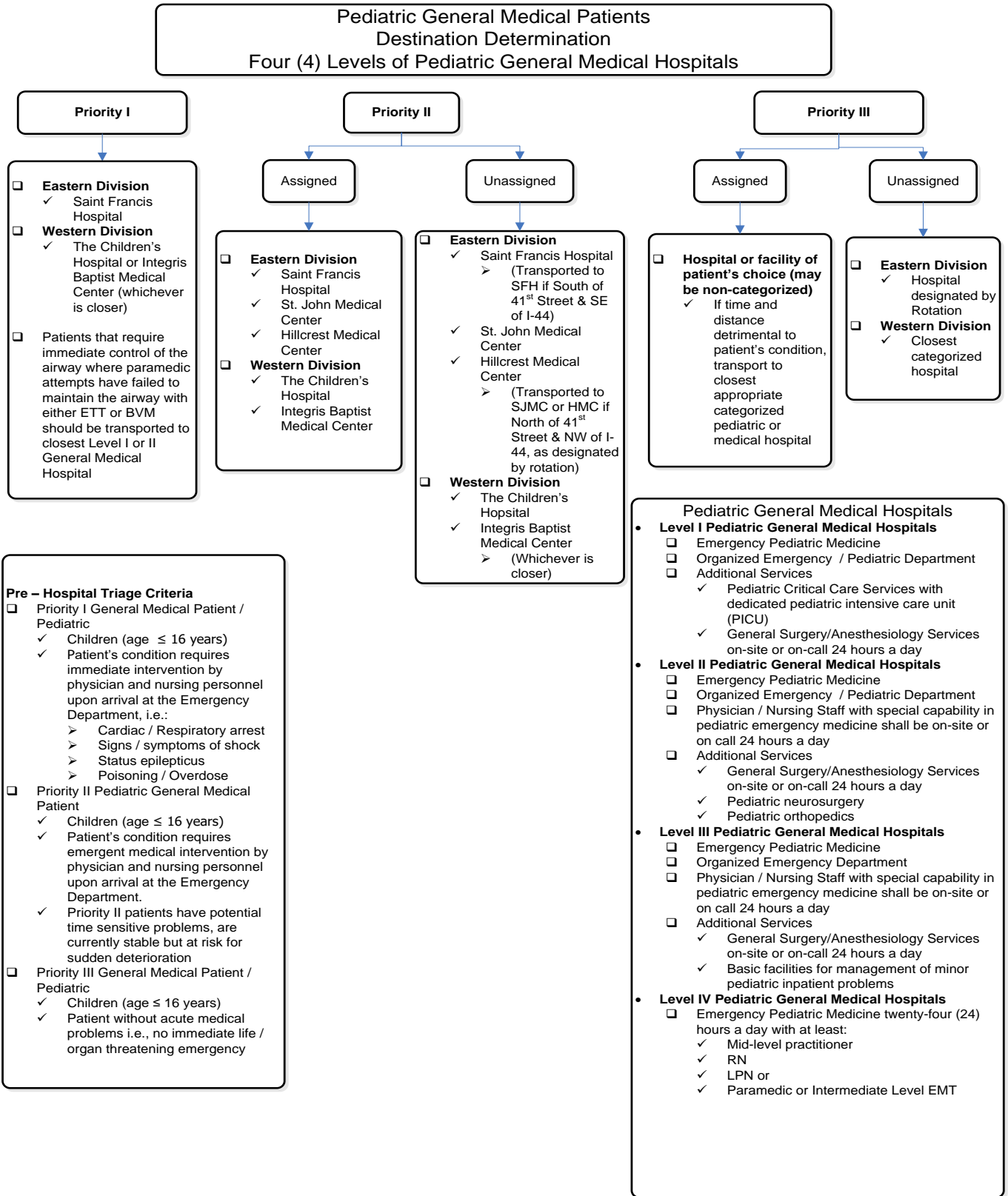
- Priority 1 Trauma Patient / Adult
 - ✓ Patients with high energy blunt or penetrating trauma with physiologic or anatomic abnormalities
- Priority 2 Trauma Patient / Adult
 - ✓ Patients who are involved in a high energy event with risk for severe injury despite stable or normal vital signs with no altered mentation or respiratory distress or patients with a single system injury
 - ✓ Select & Isolated hand injuries (Refer to I.1 Section 1)
- Priority 3 Trauma Patient / Adult
 - ✓ Patients without physiologic instability, altered mentation, neurological deficit, or significant anatomical or single system injuries and generally have been involved in low energy mechanism of injury incident.



EMS System for Metropolitan Oklahoma City and Tulsa 2021 Medical Control Board Treatment Protocols

Approved 9/9/20, Effective 1/15/21, replaces all prior versions

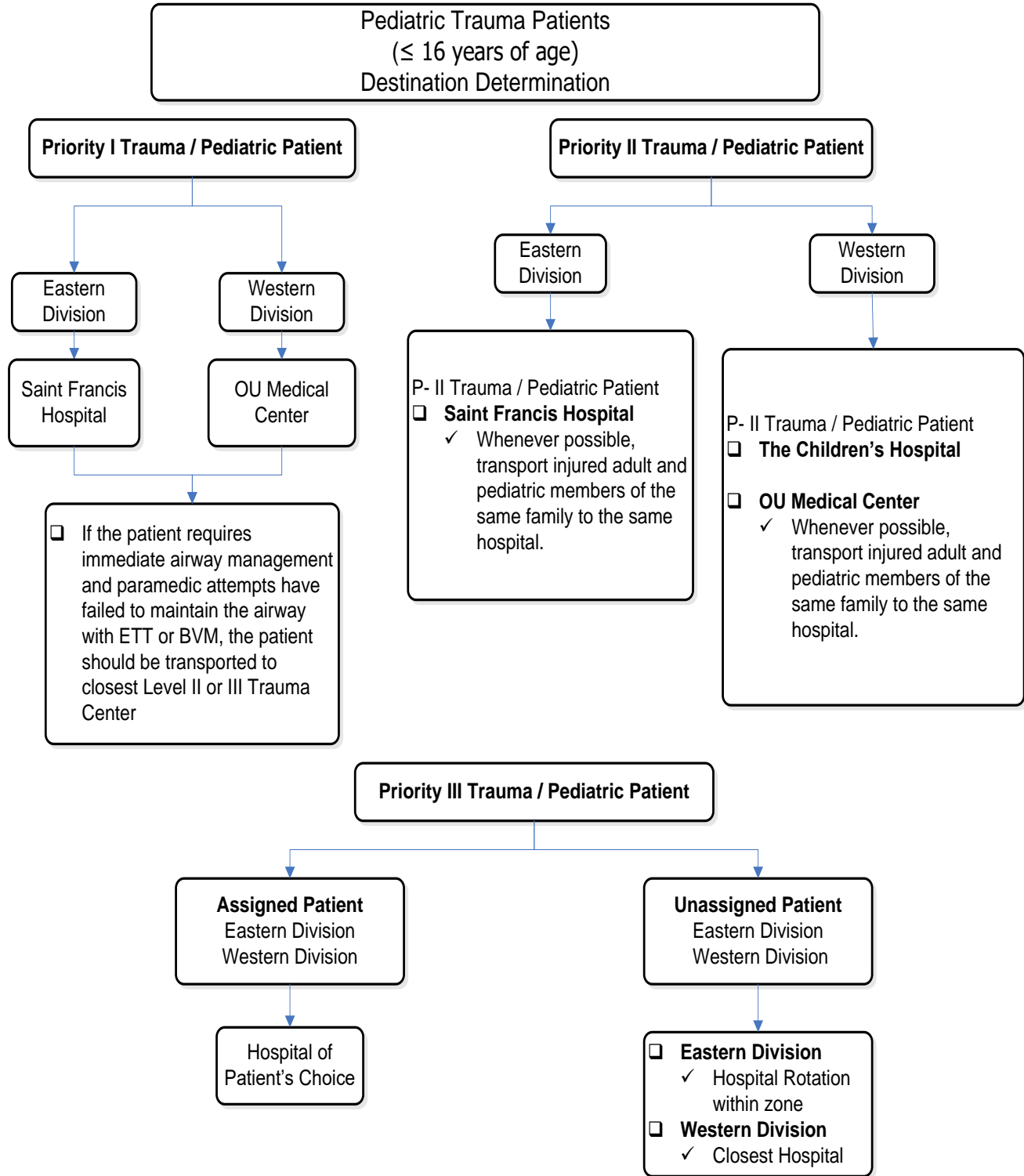
PROTOCOL 17A: Destination Determination– Pediatric General Medical Patients





**EMS System for Metropolitan Oklahoma City and Tulsa
2021 Medical Control Board Treatment Protocols**

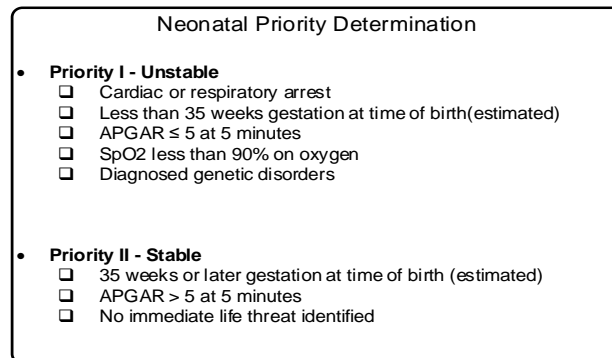
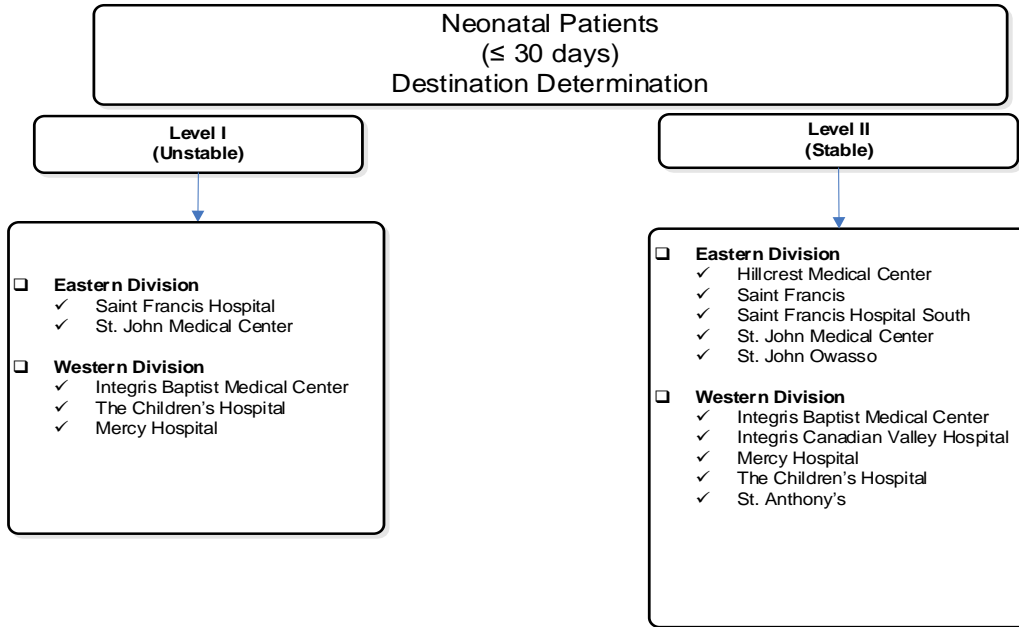
Approved 9/9/20, Effective 1/15/21, replaces all prior versions
PROTOCOL 17A: Destination Determination – Pediatric Trauma Patients





EMS System for Metropolitan Oklahoma City and Tulsa 2021 Medical Control Board Treatment Protocols

Approved 9/9/20, Effective 1/15/21, replaces all prior versions
PROTOCOL 17A: Destination Determination – Neonatal Medical Patients





EMS System for Metropolitan Oklahoma City and Tulsa 2021 Medical Control Board Treatment Protocols

Approved 9/9/20, Effective 1/15/21, replaces all prior versions

