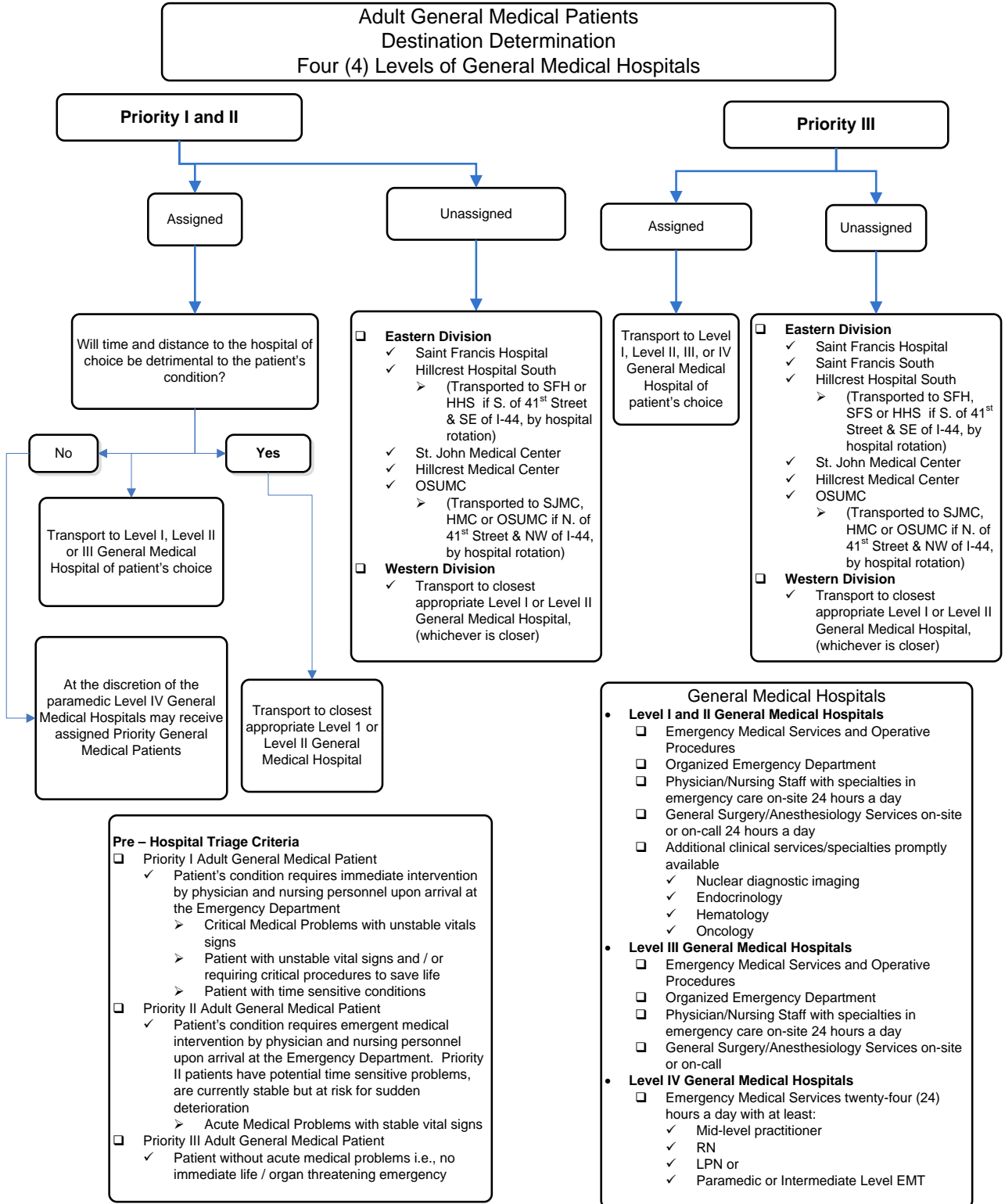




EMS System for Metropolitan Oklahoma City and Tulsa 2023 Medical Control Board Treatment Protocols

Approved 9/14/22, Effective 1/16/23, replaces all prior versions

PROTOCOL 17A: Destination Determination – Adult General Medical Patients

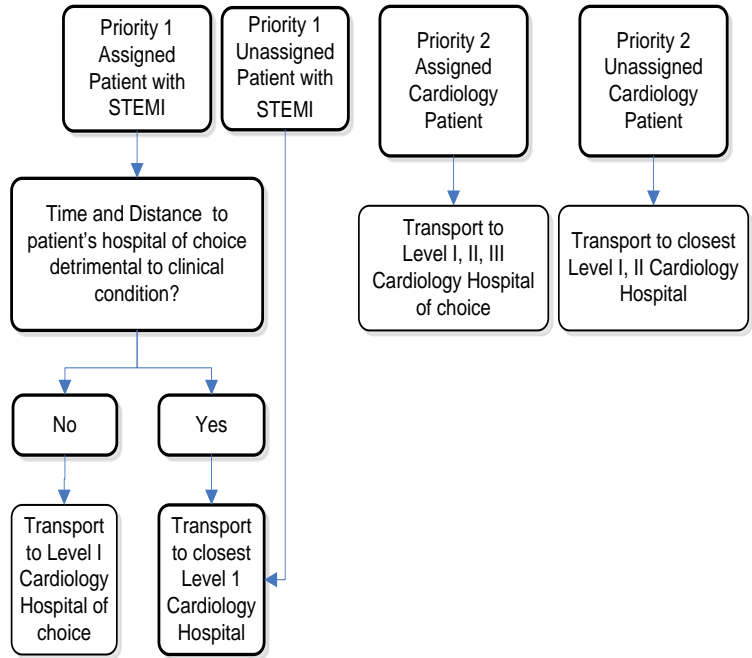




EMS System for Metropolitan Oklahoma City and Tulsa 2023 Medical Control Board Treatment Protocols

Approved 9/14/22, Effective 1/16/23, replaces all prior versions
PROTOCOL 17A: Destination Determination – Adult Cardiology Patients

Adult Cardiology Patients Destination Determination ST – Elevation Myocardial Infarction Patients Three (3) Levels of Cardiology Hospitals



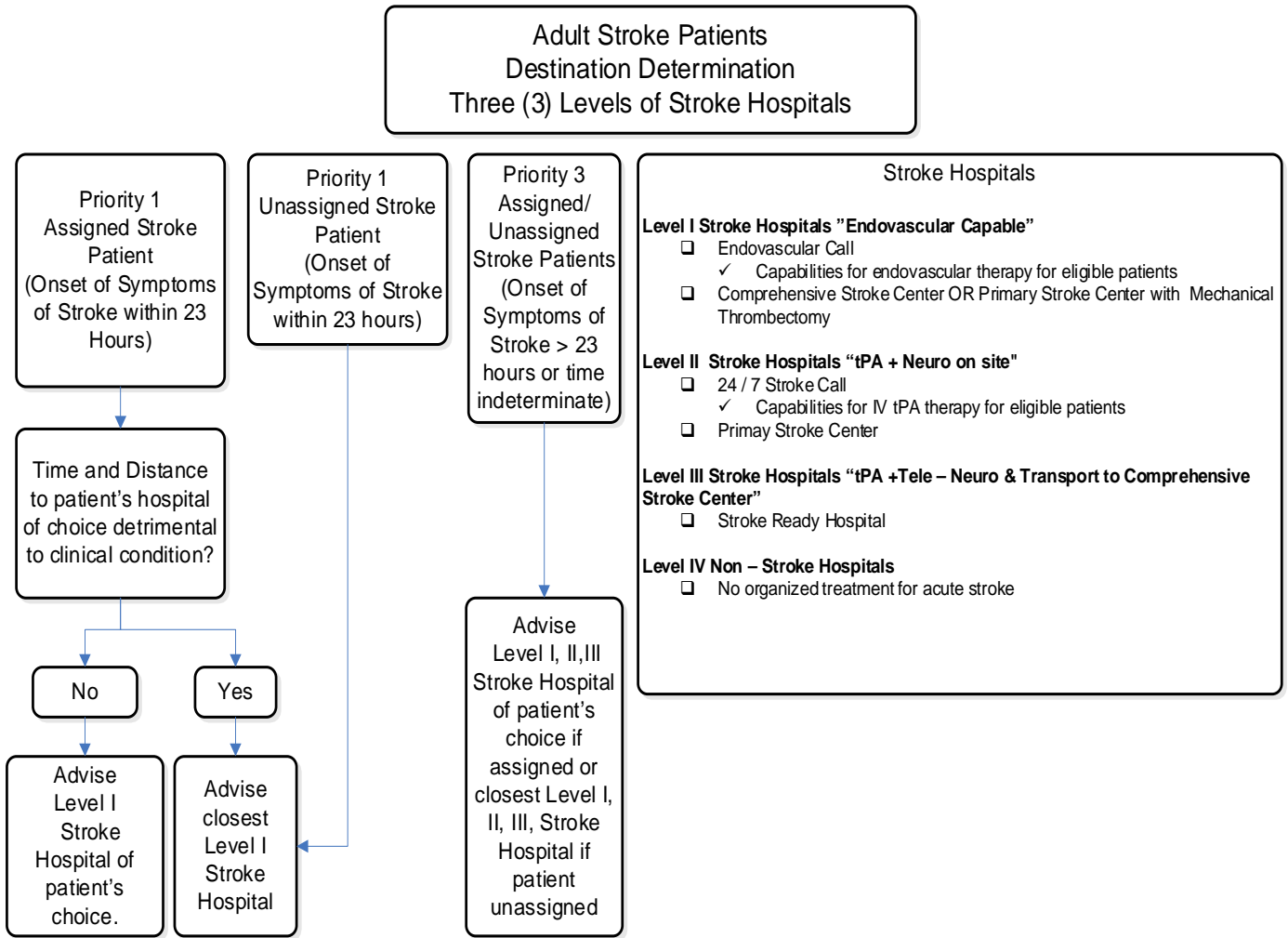
- #### Cardiology Hospitals
- Level I Cardiology Hospitals (PCI-Capable Hospital)**
- Emergency Medical Services and Operative Procedures
 - Physician/Nursing Staff trained in cardiac care 24 hours a day
 - Capability of providing
 - ✓ Immediate diagnostic angiography
 - ✓ Reperfusion therapy by thrombolysis
 - ✓ Percutaneous coronary intervention
 - ✓ Coronary artery bypass graft
 - ✓ Capabilities of receiving 12 – lead prehospital ECG
- Level II Cardiology Hospitals (Non-PCI Hospital)**
- Emergency Medical Services with an organized Emergency Department
 - Physician/Nursing Staff trained in cardiac care 24 hours a day
 - Capability of providing
 - ✓ Reperfusion therapy by thrombolysis
- Level III Cardiology Hospital (Non-PCI Hospital)**
- Emergency Medical Services twenty-four (24) hours a day with at least:
 - ✓ Mid-level practitioner
 - ✓ RN
 - ✓ LPN or
 - ✓ Paramedic or Intermediate Level EMT
 - Level III Cardiology Hospitals may **ONLY** receive:
 - ✓ Assigned Priority II cardiac patients

- #### Definition of Adult Cardiology Patient
- Priority I Adult Cardiology Patient
 - Examples:
 - ✓ Unstable Angina
 - ✓ Acute myocardial infarction / STEMI
 - ✓ Any complex of signs and symptoms consistent with acute coronary syndrome and cardiac decompensation, i.e., pulmonary edema, symptomatic cardiac dysrhythmia
 - Priority II Adult Cardiology Patient
 - Example:
 - ✓ Cardiac patients with pre-existing condition requiring evaluation only



EMS System for Metropolitan Oklahoma City and Tulsa 2023 Medical Control Board Treatment Protocols

Approved 9/14/22, Effective 1/16/23, replaces all prior versions
PROTOCOL 17A: Destination Determination – Adult Stroke Patients



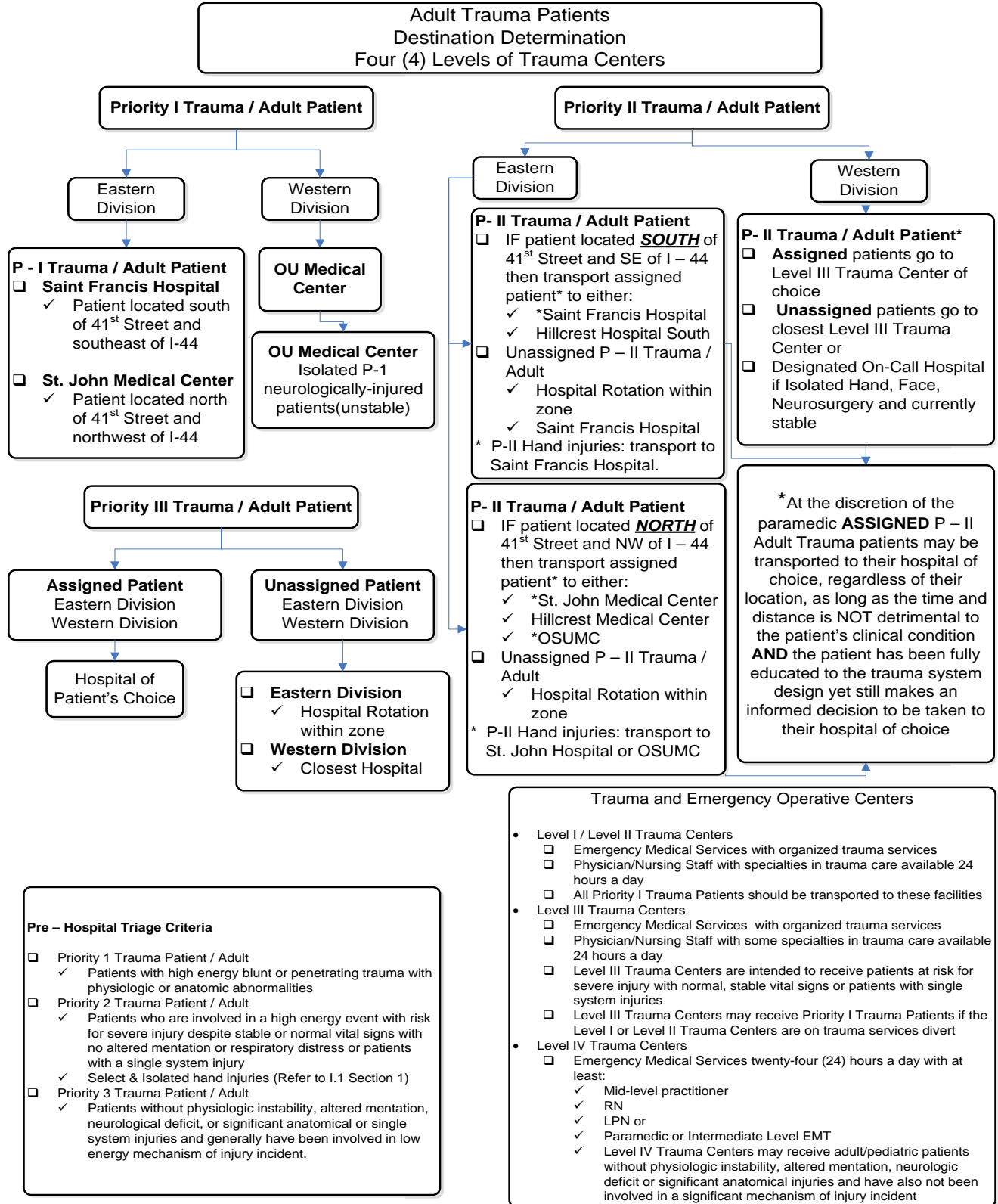
Definition of Adult Stroke Patient

- Priority I Adult Stroke Patient
 - Examples:
 - Patient with acute stroke symptoms within 23 hours of onset with abnormal Los Angeles Prehospital Stroke Screen
- Priority III Adult Stroke Patient
 - Examples:
 - Patient with acute stroke symptoms > 23 hours of onset or time indeterminate with abnormal Los Angeles Prehospital Stroke Screen



EMS System for Metropolitan Oklahoma City and Tulsa 2023 Medical Control Board Treatment Protocols

Approved 9/14/22, Effective 1/16/23, replaces all prior versions
PROTOCOL 17A: Destination Determination – Adult Trauma Patients



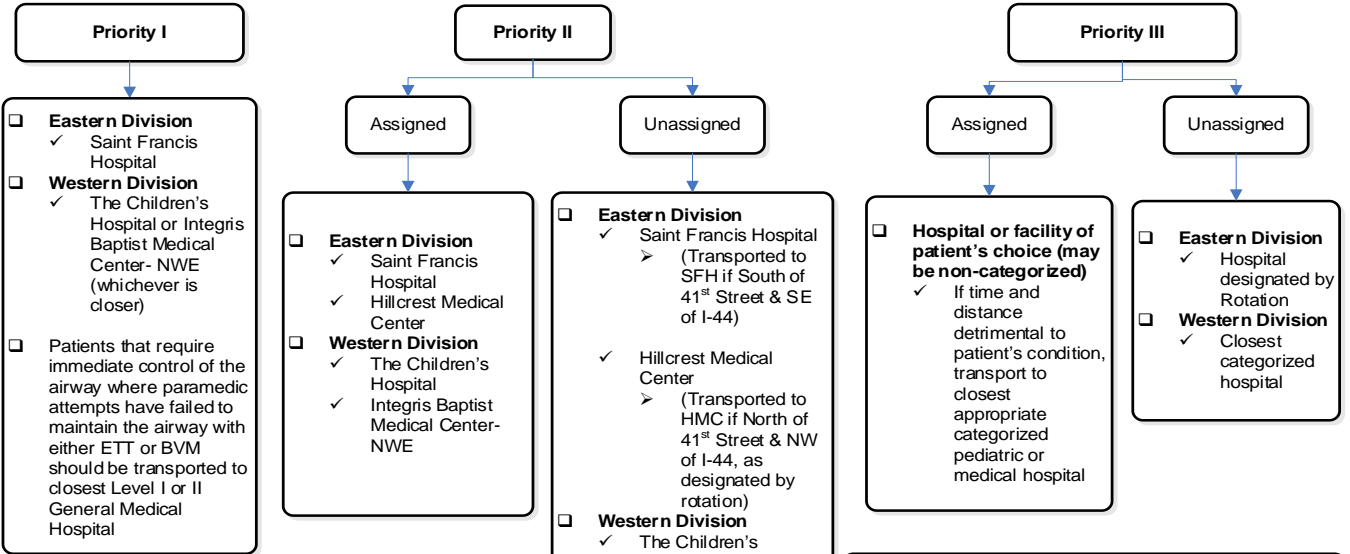


EMS System for Metropolitan Oklahoma City and Tulsa 2023 Medical Control Board Treatment Protocols

Approved 9/14/22, Effective 1/16/23, replaces all prior versions

PROTOCOL 17A: Destination Determination– Pediatric General Medical Patients

Pediatric General Medical Patients
Destination Determination
Four (4) Levels of Pediatric General Medical Hospitals



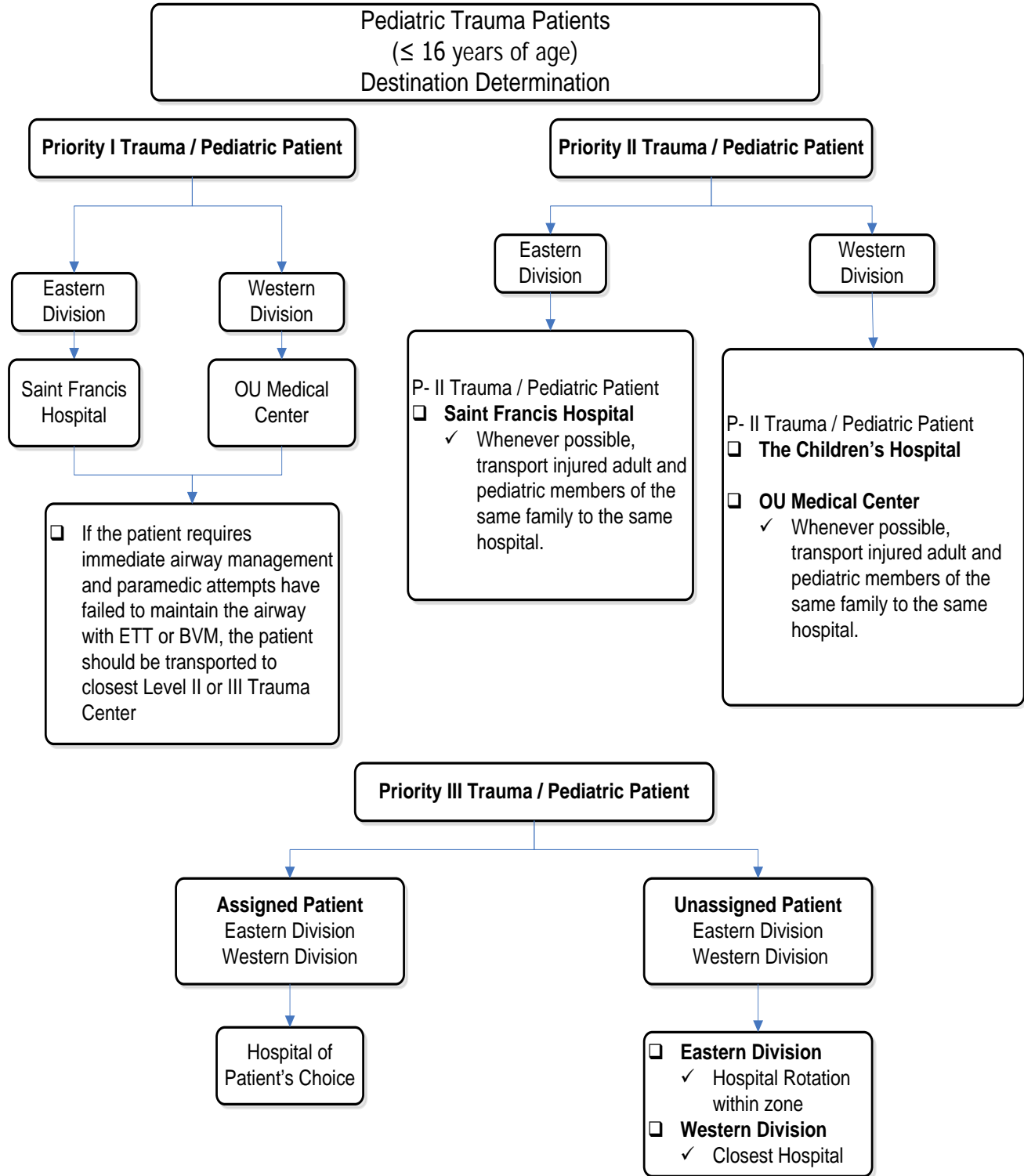
- Pre – Hospital Triage Criteria**
- Priority I General Medical Patient / Pediatric
 - ✓ Children (age ≤ 16 years)
 - ✓ Patient's condition requires immediate intervention by physician and nursing personnel upon arrival at the Emergency Department, i.e.:
 - Cardiac / Respiratory arrest
 - Signs / symptoms of shock
 - Status epilepticus
 - Poisoning / Overdose
 - Priority II Pediatric General Medical Patient
 - ✓ Children (age ≤ 16 years)
 - ✓ Patient's condition requires emergent medical intervention by physician and nursing personnel upon arrival at the Emergency Department.
 - ✓ Priority II patients have potential time sensitive problems, are currently stable but at risk for sudden deterioration
 - Priority III General Medical Patient / Pediatric
 - ✓ Children (age ≤ 16 years)
 - ✓ Patient without acute medical problems i.e., no immediate life / organ threatening emergency

- Pediatric General Medical Hospitals**
- **Level I Pediatric General Medical Hospitals**
 - Emergency Pediatric Medicine
 - Organized Emergency / Pediatric Department
 - Additional Services
 - ✓ Pediatric Critical Care Services with dedicated pediatric intensive care unit (PICU)
 - ✓ General Surgery/Anesthesiology Services on-site or on-call 24 hours a day
 - **Level II Pediatric General Medical Hospitals**
 - Emergency Pediatric Medicine
 - Organized Emergency / Pediatric Department
 - Physician / Nursing Staff with special capability in pediatric emergency medicine shall be on-site or on call 24 hours a day
 - Additional Services
 - ✓ General Surgery/Anesthesiology Services on-site or on-call 24 hours a day
 - ✓ Pediatric neurosurgery
 - ✓ Pediatric orthopedics
 - **Level III Pediatric General Medical Hospitals**
 - Emergency Pediatric Medicine
 - Organized Emergency Department
 - Physician / Nursing Staff with special capability in pediatric emergency medicine shall be on-site or on call 24 hours a day
 - Additional Services
 - ✓ General Surgery/Anesthesiology Services on-site or on-call 24 hours a day
 - ✓ Basic facilities for management of minor pediatric inpatient problems
 - **Level IV Pediatric General Medical Hospitals**
 - Emergency Pediatric Medicine twenty-four (24) hours a day with at least:
 - ✓ Mid-level practitioner
 - ✓ RN
 - ✓ LPN or
 - ✓ Paramedic or Intermediate Level EMT



**EMS System for Metropolitan Oklahoma City and Tulsa
2023 Medical Control Board Treatment Protocols**

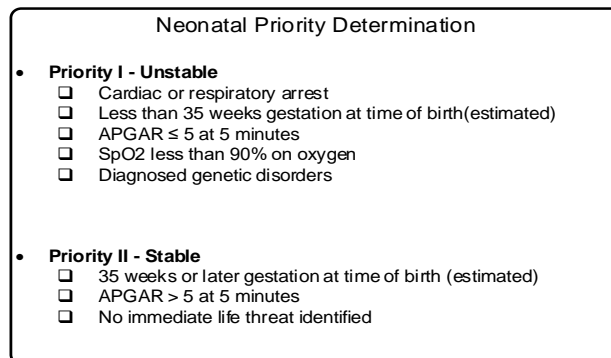
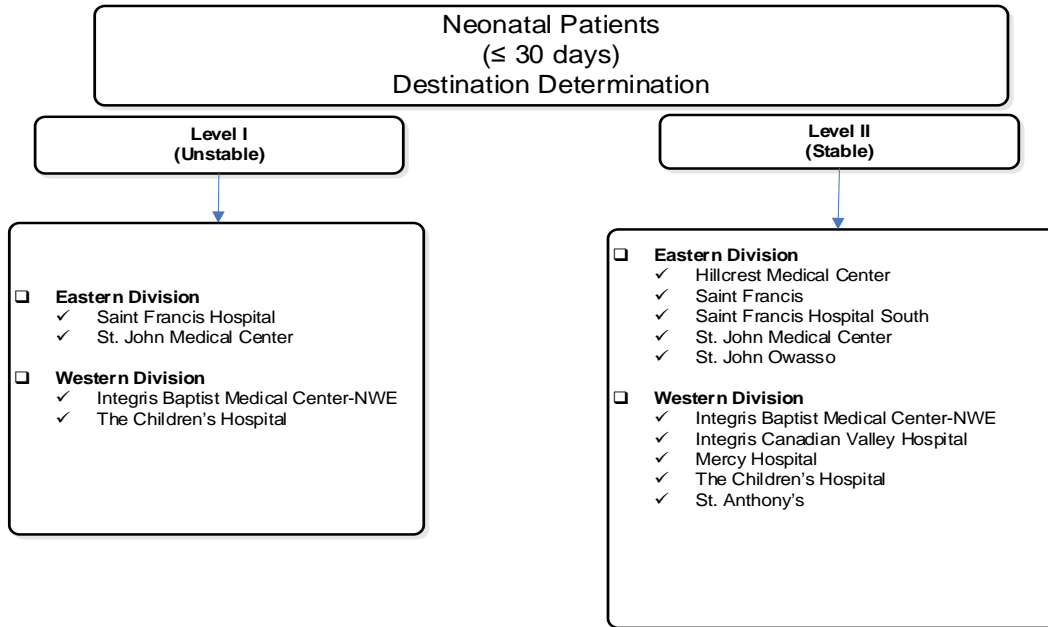
Approved 9/14/22, Effective 1/16/23, replaces all prior versions
PROTOCOL 17A: Destination Determination – Pediatric Trauma Patients





EMS System for Metropolitan Oklahoma City and Tulsa 2023 Medical Control Board Treatment Protocols

Approved 9/14/22, Effective 1/16/23, replaces all prior versions
PROTOCOL 17A: Destination Determination – Neonatal Medical Patients





EMS System for Metropolitan Oklahoma City and Tulsa 2023 Medical Control Board Treatment Protocols

Approved 9/14/22, Effective 1/16/23, replaces all prior versions

